

# TRU



# Welcome. Weyt-kp.

*Located where the North and South Thompson Rivers meet in central British Columbia, TRU's Kamloops campus is perfectly positioned. With direct access to major highways, rail lines and airports, Kamloops stands as a focal point for industry, research and opportunity —all set amid stunning natural beauty.*



TAKE A  
CAMPUS  
TOUR

TRU's campuses in Kamloops and Williams Lake are on the unceded and ancestral lands of the Tk'emlúps te Secwépemc and the T'exelc. As an international student, you'll study in a place shaped by Secwépemc history and culture and join a community that learns from and respects these lands.



# A WORLD OF PERSPECTIVES. ONE TRU.

DISCOVER YOUR PATH FORWARD.



## A truly global campus

14,000+ students, including 3,000+ international students from 100+ countries and regions.



## 140+ on-campus programs

In business, science, arts, health, trades, engineering, education, law, tourism and more.



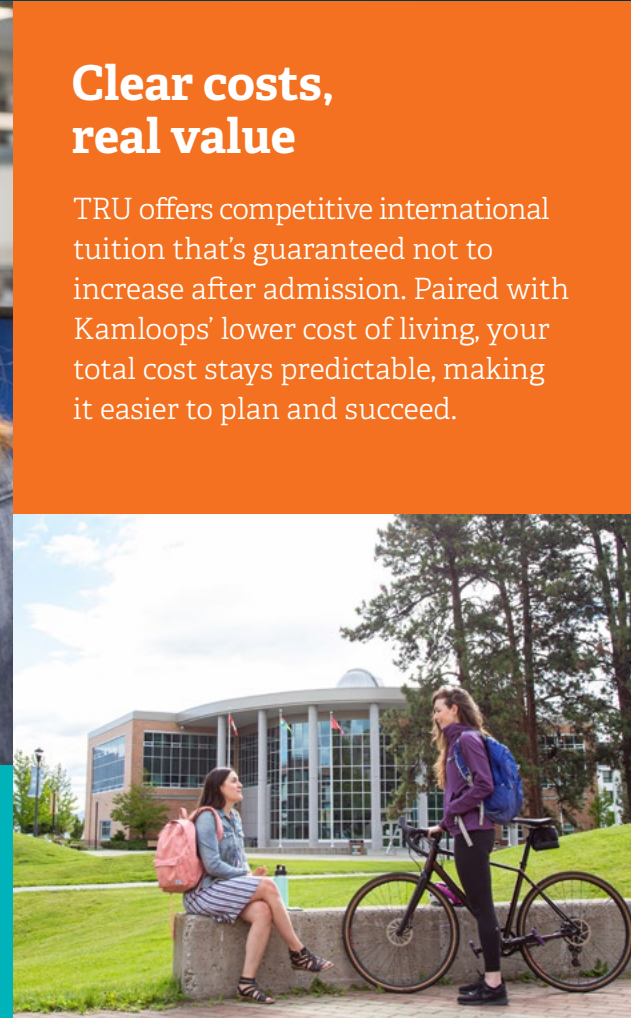
## Career-ready experience

Through co-op terms, research projects and real-world experience, you'll build the skills employers want: 93% of our graduates are employed.



## Leader in sustainability

Top-ranked in Canada for commitment to environmental responsibility.



## Clear costs, real value

TRU offers competitive international tuition that's guaranteed not to increase after admission. Paired with Kamloops' lower cost of living, your total cost stays predictable, making it easier to plan and succeed.

## Support every step of the way

At TRU, you'll find a welcoming community and the support you need to succeed, from academics to life on campus. You're never on your own here.





Hassan Ali Syed  
PAKISTAN

"TRU and Kamloops have truly felt like home. The welcoming community, beautiful landscapes, and mild winters make it an ideal place to study and grow. I've loved being part of both on- and off-campus experiences, from volunteering in the community to joining student-led events. As an international student, I've found not just opportunities here but a real sense of belonging."

## YOUR NEW HOME: *KAMLOOPS*

### GATEWAY TO BC AND BEYOND

*Kamloops offers the quality of life you want with safe neighbourhoods, affordable living and a warm community that feels like home from day one.*

Walk or take the bus for free to major retailers like Walmart and Costco. Kamloops also offers alumni-owned international dining, local shops and a growing food and entertainment scene.

Explore world-class skiing at Sun Peaks, hike mountain trails, paddle one of the many lakes or spot local wildlife, all minutes from campus.

Kamloops is also a central hub with flights, buses and highways linking you to Vancouver, Calgary and beyond.



LEARN MORE

**100+**  
lakes within  
an hour's drive

**2000+**  
hours of  
sunshine

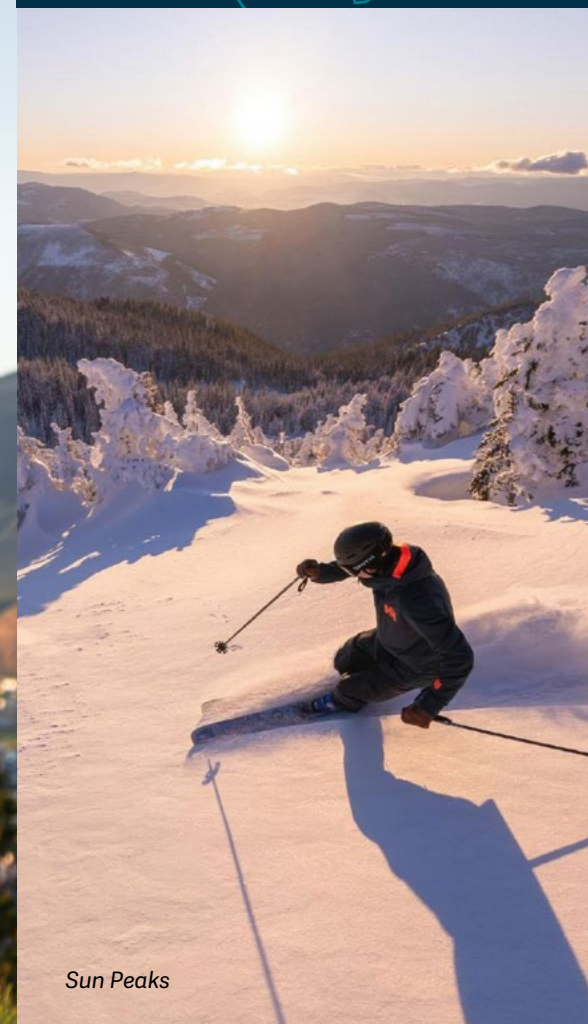
One of BC's  
**most  
affordable  
cities**

**1500+**  
events &  
activities  
every year

**100,000+**  
people in our  
thriving city



Kamloops



Sun Peaks



Annual Brewloops event



Downtown Kamloops



Bao Zhu  
CHINA

"The LEAP program opened up a whole new world for me. From Kelowna tours and rafting trips to BBQs and Halloween celebrations, LEAP gave me unforgettable memories and friendships with people from Japan, India, Germany, and many other places. I'm truly grateful for these experiences. My only regret is that I didn't discover LEAP sooner."

# Beyond the classroom

## Engage, explore and thrive

### Explore BC with friends

Start your semester with the LEAP program. Join weekend trips to Vancouver, the Rockies and local festivals for unforgettable experiences that take you beyond the classroom.

Learn more at [truleap.ca](http://truleap.ca)



### Get in the game

Cheer on the TRU WolfPack or take your skills to the next level by trying out for one of our varsity teams. Whether you're competing on the court or cheering from the sidelines, campus spirit is part of the experience.

Learn more at [gowolfpack.ca](http://gowolfpack.ca)



### Celebrate your culture and discover others

Each year, IDays brings TRU's diversity to life. Join students from around the world for a week of music, food, dance and tradition.



TRU is a welcoming, respectful and inclusive space, where everyone is free to be themselves.

### Find your spot on campus

Catch up with friends over lunch at Scratch Café or Starbucks or try something new at The Den or Bento Sushi.

Head to the student lounge in the Arts and Education building for one of the best views in Kamloops.

### Find your community

Join one of TRU's 80+ student clubs. Whether you're into academics, athletics, politics, culture, religion or just having fun, there's a club for you, or you can start your own.

### Stay active

Enjoy the state-of-the-art Tournament Capital Centre and free access to the aquatic centre. Join drop-in fitness and accessible recreation classes, or play for fun in intramurals like volleyball, soccer and basketball. There's something for everyone at every level.

## SUPPORT THAT MATTERS

TRU is committed to your success, both academically and personally. These services are available to support your well-being throughout your studies.

- Mental health support through the Wellness Centre and 24/7 with access to GuardMe Student Support Program
- On-campus medical clinic
- Extended health and dental insurance
- Math Help Centre, Writing Centre and Language Learning Centre
- Multi-Faith Chaplaincy



Holi Festival at TRU



IDays at TRU

# Live on campus—or just around the corner

TRU offers guaranteed housing for first-year international students who apply by March 31. Living on or near campus is a great way to settle in, make friends and stay connected to university life.

### Feel at home from day one

Choose from three unique housing options. Enjoy city views in North Tower, independence in East Village or a modern setup in Coyote Den. All are just minutes from class.

Details at [tru.ca/housing](https://tru.ca/housing)



LEARN MORE

|                  | NORTH TOWER | EAST VILLAGE | COYOTE DEN SKELEPÉLLCW |
|------------------|-------------|--------------|------------------------|
| On Campus        | •           | 10 min walk  | 10 min walk            |
| 24 hr Front Desk | •           | •            | •                      |
| Wifi             | •           | •            | •                      |
| Laundry          | •           | •            | •                      |
| Bike Storage     | •           |              | •                      |
| Fitness          | •           |              |                        |
| Cost per month*  | \$1200      | \$808        | \$548–\$1250           |

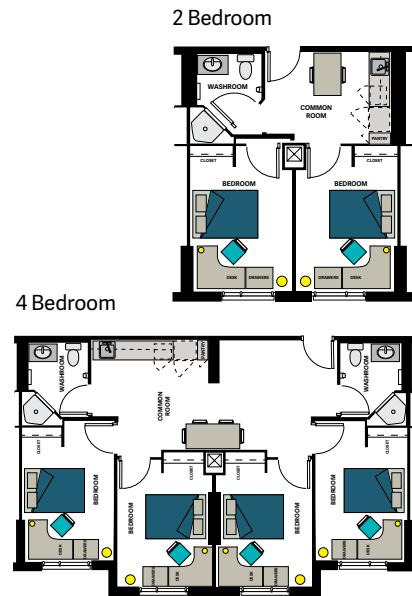
\*Note: All rates are in Canadian dollars. Rates are for the 2025/26 year and are subject to change without notice. Floor plans may slightly differ from room to room. All rates include a \$60 mandatory residence life activity fee which is non-refundable.

## NORTH TOWER

Enjoy one of the best views in the city at the 11-storey North Tower. Access premium amenities such as a cardio room, dance studio, patio with large BBQ, games room and regular social activities.

SEPTEMBER – APRIL

|                       |          |
|-----------------------|----------|
| Application Fee       | \$100    |
| 2- or 4-bedroom suite | \$9,560* |

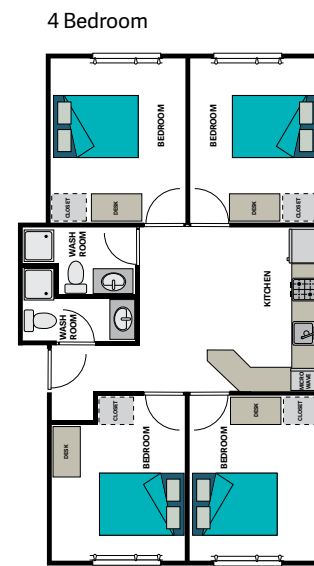


## EAST VILLAGE

Experience the independence of off-campus living with the convenience of on-campus life at East Village. This location is ideal for students looking for a more mature community with student-friendly amenities.

SEPTEMBER – APRIL

|                 |          |
|-----------------|----------|
| Application Fee | \$100    |
| 4-bedroom suite | \$6,785* |

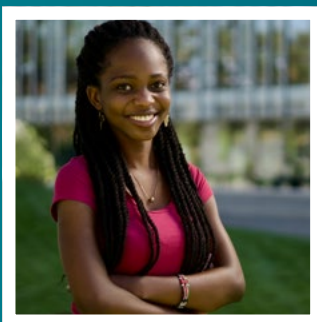
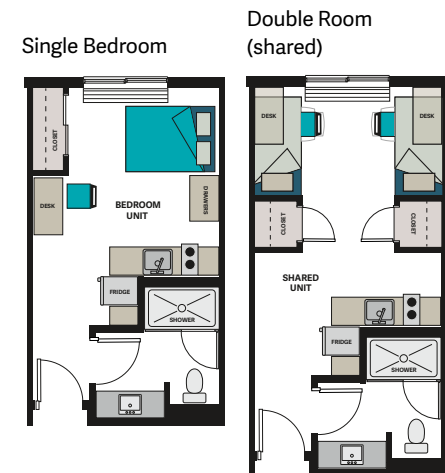


## COYOTE DEN – SKELEPÉLLCW

The new East Village residence is centrally located and within walking distance of campus, shopping and transit. Each unit has a private entrance, bathroom and apartment-sized kitchen. Shared and single bedroom suites are available.

SEPTEMBER – APRIL

|                 |           |
|-----------------|-----------|
| Application Fee | \$100     |
| Single room     | \$10,300* |
| Double room     | \$4,605*  |



Shirlene Ndenga  
KENYA

“As a new international student, living on campus made all the difference. It gave me a safe, welcoming space to adjust to a new country and start building connections right away. I made friends from around the world, found support when I needed it, and felt part of a vibrant community. Everything I needed from classes, groceries, and student services was just a short walk away. If you’re new to Kamloops, on-campus housing is the perfect place to feel at home from day one.”

### EXPLORE OFF-CAMPUS LIVING

Kamloops offers a range of affordable and accessible housing options. Find the space that works for you. TRU World can connect you with resources and guidance to help you start your search with confidence.

### EXPERIENCE LOCAL LIFE WITH HOMESTAY

Live with a Kamloops family through TRU’s Homestay program. It’s a chance to practice English and enjoy home-cooked meals in a supportive environment.

**September–April:** \$1,200 per month, including meals.



At TRU, you're never on your own. From application to graduation, we offer personalized support at every stage of your journey.

# HERE TO HELP EVERY STEP OF THE WAY

## 1 BEFORE YOU ARRIVE Get set for success

**Our international recruitment and admissions team** walks you through the entire application process.

**Study Permit help:** With BorderPass, you'll receive expert immigration guidance from licensed lawyers at no extra cost.

## 2 AFTER ACCEPTANCE Plan your program

**Academic advisors** help you choose the right courses and build a plan that aligns with your goals.

**International student advisors (ISAs)** support your transition to life in Canada, from housing to health insurance and more.

## 3 STARTING STRONG Your first weeks

**Orientation and peer programs** connect you with other students and provide tools for adjusting to life in a new country.

**Language support and cultural advising** help you feel confident communicating and thriving in your new environment.

## 4 ONGOING SUPPORT When you need it

**Math Help Centre, Writing Centre and Language Learning Centre** provides one-on-one academic support throughout your studies.

**Wellness Centre** provides access to mental health services, self-care resources and a welcoming place to talk.

**Immigration advising** from certified experts, including Regulated International Student Immigration Advisors (RISIAs) and Regulated Canadian Immigration Consultants (RCICs), helps you navigate study permits, visas and post-graduation options with confidence.

### All the way through: We've got you

No matter where you are in your journey, TRU support teams stay with you from your first class to graduation.



Daniela Chaín  
MEXICO

"The support I received from ISAs and RISIAs was incredibly helpful. They guided me through the study permit process, including forms, account setup, and document review. Their assistance made it easy to extend my stay, focus on my studies, and enjoy everything British Columbia has to offer."

# Meet your support teams

## INTERNATIONAL ADMISSIONS

Our international admissions team:

- Processes applications
- Provides course registration
- Collects payments
- Assists with admissions and registration inquiries



**Rae-Anne Rickett**  
Associate Director,  
Int'l Admissions &  
Enrolment Services



**Charlene Milburn**  
Int'l Enrolment  
Services Supervisor



**Savannah Dakers**  
Int'l Admissions &  
Records Officer



**Julia Ehlenbroeker**  
Int'l Admissions &  
Records Officer



**Jet Jensen**  
Int'l Admissions &  
Records Officer



**Jean Linteris**  
Int'l Enrolment  
Services Coordinator



**Sanay Mathur**  
Int'l Admissions &  
Records Officer



**Ananna Mitra**  
Int'l Admissions &  
Records Officer



**Amrita Randhawa**  
Int'l Admissions &  
Records Officer



**Deb Shafer**  
Int'l Admissions &  
Records Officer

## INTERNATIONAL ACADEMIC ADVISING

Once you're accepted, our international academic advisors:

- Plan your courses before you arrive
- Monitor your academic performance
- Provide counselling support
- Advise on program requirements



**Charlene Munro**  
Advising Supervisor



**Lesley DeRose**  
Int'l Academic Advisor



**Yuliia Medvedieva**  
Int'l Academic Advisor



**Marnie Storie**  
Int'l Academic Advisor



**Brianna McIlquaham**  
Int'l Academic Advisor



**Sarah Bingham-Hall**  
Int'l Academic Advisor



**Nivi Xavier**  
Advising Supervisor

## INTERNATIONAL STUDENT ADVISORS

Our multilingual student services team helps with personal counselling and assistance in most aspects of student life in Canada, including:

- Housing
- Visas, study permit and work permit applications
- Orientation and welcome services including airport reception, city tours and peer programs
- Academic liaison
- Cultural support



**Reuben Onyango**  
Director, International  
Student Services  
**RCIC**



**Alesya Sharay**  
Manager, International  
Student Services  
🌐 Russian



**Shilpee Sharma**  
ISA  
🌐 Hindi



**Tanvir Alam**  
ISA  
🌐 Bengali



**Osi Omonokhua**  
ISA  
🌐 Hausa



**Reyna Denison**  
ISA  
🌐 Spanish



**Marianna Abutalipova**  
Int'l Support Services  
Supervisor  
🌐 Russian, Dutch, French



**Zahid Sheikh**  
ISA  
🌐 Punjabi, Urdu



**Sandy Defieux**  
ISA  
🌐 Mandarin



**Sonali**  
Homestay Supervisor  
🌐 Hindi, Punjabi

**RCIC:** Regulated Canadian Immigration Consultant

**RISIA:** Regulated International Student Immigration Advisor

**ISA:** International Student Advisor

# RESEARCH AND INNOVATION THINK BIG. DO MORE.

Explore innovation centres and research labs focused on sustainability, health, data science and clean tech.

At the TRU Makerspace, experiment with 3D printing, podcasting, virtual reality and more.

*Kamloops is rapidly becoming a centre for advanced research and technology.*

New developments are on the horizon including a regional cancer centre, AI and data innovation centres, and one of Canada's first renewable aviation fuel production sites. **TRU students are studying in a city where the future is being built.**

The **Undergraduate Research Experience Award Program (UREAP)** offers a \$6,000 scholarship to support your own original research. Work with a faculty mentor, build career-ready skills and turn your ideas into impact, starting as early as second year.

The **TRU Generator** is our entrepreneurship hub where students turn ideas into startups. Get mentorship, pitch your business and join a growing community of student innovators.

Earn formal recognition for your undergraduate research experiences with the **Undergraduate Research Certificate**. Become an ambassador to enhance your skills with the **Undergraduate Research Ambassadors Program**.

A CITY OF OPPORTUNITY

Kamloops has a strong and growing economy rooted in core industries like healthcare, education, transportation, agriculture, mining and forestry. It's also expanding in tech, clean energy, tourism and research. As the city grows, so do the opportunities for students to connect with local employers, build experience and launch careers.



Naresh Sharma  
INDIA

"I arrived at TRU with curiosity and ambition. Small classes, supportive professors, and a transformative co-op turned theory into real-world skills. Since earning my BCS, I've built software a startups in Vancouver and Silicon Valley, and I now lead privacy and pseudonymity features for Facebook Groups at Meta. Shipping products used by millions and mentoring young engineers are career highlights. TRU's empowering community and global mindset continue to fuel my journey every day forward."

# Work while you study—succeed when you graduate

*TRU prepares you to succeed in your career from day one. With career-focused programs, paid co-op placements and one-on-one support, you'll be ready for life after graduation.*

TRU grads are hired in fields like:

- Banking and finance
- Tech and data science
- Healthcare and life sciences
- Government and policy
- Education and research

Where our grads go:

From local companies to global careers, TRU alumni are working in Vancouver, Toronto, London, Dubai, Hong Kong and beyond.

Support continues after graduation

Our career team helps with job search strategies, networking and post-graduation work permits.

International grads can work in Canada for up to three years.

What you gain at TRU:

- Paid experience while studying
- Career coaching and job search help
- Professional connections that last
- Post-grad work options in Canada
- Confidence to start strong and go far

Explore TRU's alumni network on LinkedIn [linkedin.com/school/thompson-rivers-university/people](https://www.linkedin.com/school/thompson-rivers-university/people)



LEARN MORE



Co-op and Internships



AI-enabled Career Navigator



From University to Career guide



Job Fairs



Interview strategies

# Work during your studies

Working part-time during your studies

You can work in Canada while studying.

- During regular semesters, you may work up to 24 hours/week off campus.
- During scheduled breaks, you may work unlimited hours.

Learn more at [cic.gc.ca/english/study/work.asp](https://cic.gc.ca/english/study/work.asp)

Build experience while you study

From your first year, you can get involved in hands-on learning through labs, field schools, research and community projects.

**BC is the province with the highest minimum wage at \$17.85**

# TRU Co-operative Education (Co-op)

Co-op combines academic study with paid, hands-on experience in your field. Many programs offer co-op opportunities that let you build skills, earn credit and get a head start on your career.

Why co-op:

- Apply what you learn in real jobs
- Get paid while you study
- Build your resume before graduation
- Make professional connections



LEARN MORE

TYPICAL WAGES & EARNINGS

|                  |                                    |
|------------------|------------------------------------|
| BUSINESS         | <b>\$20–33</b><br>~\$4,300 monthly |
| SCIENCE          | <b>\$21–30</b><br>~\$4,145 monthly |
| ARTS             | <b>\$18–25</b><br>~\$3,495 monthly |
| COMPUTER SCIENCE | <b>\$19–40</b><br>~\$4,795 monthly |
| TOURISM          | <b>\$18–22</b><br>~\$3,250 monthly |
| ENGINEERING      | <b>\$19–40</b><br>~\$4,795 monthly |



Photo by TRUSU

Domenica Obergon  
ECUADOR  
Company: ACE-WIL BC/Yukon

"TRU's co-op department played an important role in helping me secure my position. Their guidance and support connected me with the right opportunity, and I'm now contributing to a provincial project focused on creating meaningful work experiences for students."

# TRU Study Abroad: big opportunities, direct access

At TRU, you don't have to compete with thousands of students for a spot abroad. TRU provides direct access to diverse international programs, enabling you to immerse yourself in new cultures and academic environments seamlessly.

- **Earn credits while exploring the world:** student exchange: a semester or two at one of TRU's global partner institutions.
- **Short-term summer exchanges:** two to four weeks abroad, while earning credit.
- **International field schools:** Faculty-led trips for hands-on, credit-based learning experiences.

With personalized support and fewer barriers, it's easier to take your education around the world.

Discover where TRU can take you: [tru.ca/studyabroad](https://tru.ca/studyabroad)



# International Transfer Credits

## Transfer credit

Bring your previous studies with you. If you have completed courses at a recognized post-secondary institution, you may be eligible to transfer credits toward your TRU program.

To be considered for transfer credit, you must provide:

- Original or attested transcripts
- Official course outlines (syllabus)
- English translations of all documents

Submit these after your study permit is approved and before you arrive at TRU. Without these, you may not receive credit in your first semester.

| INTERNATIONAL ACCREDITATIONS                      |   |  |
|---|---|--|
| CREDENTIAL  | REQUIREMENTS FOR ADMISSION/TRANSFER CREDIT  |  |
| International Baccalaureate (IB)                  | <ul style="list-style-type: none"><li>• Credit for higher level courses with scores of 5, 6 or 7</li></ul>  | <ul style="list-style-type: none"><li>• Official transcript must be sent from the testing centre</li><li>• Students may decline credit and retake course</li></ul> |
| Advanced Placement (AP)                           | <ul style="list-style-type: none"><li>• Credit for AP exams with scores of 4 or 5</li></ul>   | <ul style="list-style-type: none"><li>• Official transcript required from the College Board</li></ul>  |
| GCES (General Certificate of Educational Studies) | <ul style="list-style-type: none"><li>• Two A-levels + two AS-levels or</li><li>• Three A-levels + two O-levels</li><li>• Math and English A-level required or upgrading may be necessary</li></ul> | <b>Transfer credit:</b> <ul style="list-style-type: none"><li>• A or B in approved A-levels</li><li>• Official GCE transcript required</li></ul>                   |
| GED (General Education Development)               | <ul style="list-style-type: none"><li>• Must be 17+ years old</li><li>• IELTS required for admission</li></ul>  | <ul style="list-style-type: none"><li>• Accuplacer math assessment required at TRU</li></ul>   |

Want to see how your credits transfer before you arrive? Visit [tru.ca/transfercredits-international](https://tru.ca/transfercredits-international)

# Your path. Your TRU.

Whether you're here for four weeks, four months or four years, TRU fits your journey. Study on campus, online or with our global partners, whatever works for you.

## Short-term and customized programs

Join TRU for a few weeks, on campus or online, through:

- Language and culture programs
- Soccer and Language camps
- Academic transition programs

Learn more: [truworld.ca/itc](https://truworld.ca/itc)

## Can't come to TRU yet? Bring TRU to you.

### TRU programs abroad

Study a TRU business or computing science program at one of our partner universities in China or India. Get the same degree, closer to home.

### Pathway programs

Start your studies at a partner institution and transfer your credits to TRU when you're ready to continue your degree in Canada.

### Visiting student program

Spend a semester or two at TRU and transfer those credits back to your home university. A global experience, on your terms.

Explore all options: [tru.ca/truworld/transnational-programs](https://tru.ca/truworld/transnational-programs)

## TRU your way: English for Academic Purposes (EAP)

Start where you are and build your path to academic success. TRU's EAP program helps you meet English language requirements while earning credits, even before you're fully admitted to a degree program.

Flexible entry points based on your current English level:

- **EAP Level 5**  
IELTS 6.0 (no band below 5.5)  
Take 2 EAP courses and 3 academic courses in your first semester.
- **EAP Level 4**  
IELTS 5.5 (no band below 5.0)  
Take 4 EAP courses and 1 academic course in your first semester.

With small class sizes, personalized support and expert instructors, you'll build the confidence and skills to thrive at TRU. Your way, on your timeline.



LEARN MORE

# Study options for international students

All course and admission information subject to change.

|  | PGWP ELIGIBLE <sup>[1]</sup> | LENGTH <sup>[2]</sup>   | INTAKES <sup>[3]</sup> | ADMISSION TYPE <sup>[4]</sup> | CO-OP/ PRACTICUM <sup>[5]</sup> | PAGE  |
|--|------------------------------|-------------------------|------------------------|-------------------------------|---------------------------------|-------|
| JURIS DOCTOR   |                              |                         |                        |                               |                                 |       |
| Law – Juris Doctor   | ✖                            | 3 years                 | Sept                   | Competitive                   | P                               | 31    |
| GRADUATE PROGRAMS  |                              |                         |                        |                               |                                 |       |
| Master of Arts in Human Rights and Social Justice  | ✖                            | 1.5 years               | Sept                   | Competitive                   | P                               | 23    |
| Master of Business Administration  | ✖                            | 2 years                 | Sept/Jan               | Competitive                   |                                 | 25    |
| Master of Education  | ✖                            | 1.5 to 2 years          | Sept/Jan               | Competitive                   |                                 | 28    |
| Master of Engineering Science (Software Engineering)   | ✖                            | 2 years                 | Sept                   | Competitive                   | C                               | 32    |
| Master in Environmental Economics and Management   | ✖                            | 1–2 years               | Sept/Jan               | Competitive                   |                                 | 25    |
| Master of Nursing  | ✖                            | 2 years                 | Sept                   | Limited                       | P                               | 30    |
| Master of Science in Data Science  | ✖                            | 2 years                 | Sept                   | Limited                       |                                 | 31    |
| Master of Science in Environmental Economics and Management  | ✖                            | 1–2 years               | Sept/Jan               | Competitive                   |                                 | 25    |
| Master of Science in Environmental Science   | ✖                            | 2–3 years               | Sept/Jan/ May          | Competitive                   |                                 | 32    |
| POST-BACCALAUREATE DIPLOMAS (PBD)  |                              |                         |                        |                               |                                 |       |
| Post-Baccalaureate Diploma in Applied Data Science   | ✖*                           | 2 years (60 credits)    | Sept                   | Limited                       |                                 | 32    |
| Post-Baccalaureate Diploma in Mathematics and Economics  | ✖                            | 2 years (48–60 credits) | Sept/Jan               | Open                          | C                               | 26    |
| Post-Baccalaureate Diploma in Supply Chain Management  | ✖*                           | 2 years (48–60 credits) | Sept/Jan               | Open                          | C                               | 27    |
| Post-Baccalaureate Diplomas in: Accounting, Business Administration, Economics, Economics and Political Studies, Entrepreneurship, Finance, Human Resources, Management, International Business, Marketing |                              | 2 years (48–60 credits) | Sept/Jan               | Open                          | C                               | 25–27 |
| Post-Baccalaureate Diploma in Politics and International Studies   |                              | 16 months (48 credits)  | Sept/Jan               | Open                          |                                 | 23    |
| Post-Baccalaureate Diploma in Tourism Destination Development  |                              | 2 years (54 credits)    | Sept/Jan               | Limited                       | C                               | 22    |

[1] Post Graduation Work Permit (PGWP) eligibility is subject to change according to IRCC requirements. Students are advised to check [www.truworld.ca/programs](https://www.truworld.ca/programs) or scan QR code for the most up-to-date information on program-specific PGWP eligibility. Please note that regardless of a program's PGWP eligibility, the issuance of a PGWP is at the sole discretion of IRCC.

[2] Program duration is listed in academic years. In most cases, one academic year consists of two academic semesters and is approximately eight months in length

[3] Additional intakes may become available. Please check [www.truworld.ca/programs](https://www.truworld.ca/programs) or scan QR code for the latest intake information.

[4] Open Admission: Most programs are open to all applicants who meet TRU's general admission requirements (e.g., high school graduation or equivalent). Limited Admission: Programs with a limited number of seats. Applicants must meet program-specific requirements, and admission is offered until seats are filled. Competitive Admission: Programs with high demand and limited space. Meeting minimum requirements does not guarantee admission; applicants are ranked and selected based on grades or other criteria.

[5] At TRU, co-op is a paid, career-oriented work term coordinated through the university, while practicum is usually unpaid, program-specific field experience under professional supervision. Co-op builds broad industry skills, whereas practicum fulfills hands-on requirements for professional certification or licensing.

\* IRCC has extended PGWP eligibility for these programs until early 2026.



LEARN MORE

|   | PGWP<br>ELIGIBLE <sup>[1]</sup> | LENGTH <sup>[2]</sup>                         | INTAKES <sup>[3]</sup> | ADMISSION<br>TYPE <sup>[4]</sup> | CO-OP/<br>PRACTICUM <sup>[5]</sup> | PAGE |
|---|---------------------------------|---|------------------------|----------------------------------|------------------------------------|------|
| UNDERGRADUATE DEGREES   |                                 |   |                        |                                  |                                    |      |
| <b>Bachelor of Arts</b><br><i>Majors: Applied Creative Arts, Economics, Economics &amp; Math, Economics &amp; Political Studies, English, Geography &amp; Environmental Studies, History, Mathematics, Philosophy, Psychology, Sociology</i>  | ✖                               | 4 years (120 credits)                         | Sept/Jan/<br>May       | Open                             | C                                  | 24   |
| <b>Bachelor of Business Administration</b><br><i>Majors: Accounting, Economics, Entrepreneurship, Finance, Human Resource Management, International Business, Marketing, Supply Chain Management</i>  | ✖                               | 4 years (120 credits)                         | Sept/Jan               | Open                             | C                                  | 27   |
| <b>Double Degrees: Bachelor of Business Administration &amp; Bachelor of Arts or Bachelor of Business Administration and Bachelor of Computing Science</b><br><i>**Duration: 5 years or 1 year if proper degree was obtained.</i>   | ✖                               | 5 years (150 credits)                         | Sept/Jan               | Open                             | C                                  | 27   |
| <b>Bachelor of Computing Science</b>  | ✖                               | 4 years (120 credits)                         | Sept/Jan               | Open                             | C                                  | 32   |
| <b>Bachelor of Communication and Digital Journalism</b><br><i>Majors: Public Relations, Media Studies, Digital Journalism.</i>  | ✖                               | 4 years (120 credits)                         | Sept/Jan               | Open                             | C                                  | 24   |
| <b>Bachelor of Education (Elementary)</b><br><i>Duration: 5 years or 2 years (60 credits) if proper degree was obtained**</i>   | ✖                               | 5 years (150 credits) or 2 years (60 credits) | Sept                   | Competitive                      | P                                  | 28   |
| <b>Bachelor of Education (Secondary) Science, Technology, Engineering, &amp; Mathematics (STEM)</b><br><i>Duration: 5 years or 1 year (60 credits) if proper degree was obtained**</i>  | ✖                               | 5 years (150 credits) or 1 year (60 credits)  | May                    | Competitive                      | P                                  | 28   |
| <b>Bachelor of Engineering in Computer Engineering</b>  | ✖                               | 5 years                                       | Sept                   | Limited                          | C                                  | 33   |
| <b>Bachelor of Engineering in Software Engineering</b>  | ✖                               | 5 years                                       | Sept                   | Competitive                      | C                                  | 33   |
| <b>Bachelor of Interdisciplinary Studies</b> (3rd year entry)   | ✖                               | 2 years (60 credits)                          | Sept/Jan               | Limited                          | C                                  | 24   |
| <b>Bachelor of Natural Resource Science**</b>   | ✖                               | 4 years (120 credits)                         | Sept/Jan               | Limited                          | C                                  | 33   |
| <b>Bachelor of Science</b><br><i>** Majors: Animal Biology, Biology, Cellular, Molecular, Chemical Biology, Chemistry, Computing Science, Computing Science &amp; Mathematics, Data Science, Ecology &amp; Environmental Biology, Environmental Chemistry, General Science, Mathematics, Mathematics &amp; Economics, Molecular &amp; Microbial Biology, Physics, Pre-Professional Health Science</i> | ✖                               | 4 years (120 credits)                         | Sept/Jan/<br>May       | Open                             | C                                  | 33   |
| <b>Bachelor of Science in Nursing</b>   | ✖                               | 4 years (120 credits)                         | Sept                   | Competitive                      | P                                  | 30   |
| <b>Bachelor of Social Work</b> (3rd year admission)   | ✖                               | 4 years (120 credits)                         | Jan                    | Competitive                      | P                                  | 29   |
| <b>Bachelor of Technology</b> (3rd year admission, after technology diploma, e.g. Water treatment, Electrical, Architectural Eng.)  | ✖                               | 2 years                                       | Sept/Jan               | Limited                          |                                    | 35   |
| <b>Bachelor of Tourism Management</b><br><i>**General studies concentrations: Resort Experience, Innovation and Entrepreneurship, Festivals and Events, Adventure Studies</i><br><i>*Majors: Entrepreneurship, Tourism Studies, Adventure Studies</i>   | ✖                               | 4 years (120 credits)                         | Sept/Jan               | Limited                          | C                                  | 22   |
| <b>Engineering</b> – First & second year transfer to UBC and UVic   | ✖                               | 1 to 2 years                                  | Sept                   | Competitive                      | C                                  | 34   |
| <b>Forestry</b> – First & second year transfer to UBC   | ✖                               | 1 to 2 years                                  | Sept                   | Limited                          |                                    |      |

|   | PGWP<br>ELIGIBLE <sup>[1]</sup> | LENGTH <sup>[2]</sup> | INTAKES <sup>[3]</sup> | ADMISSION<br>TYPE <sup>[4]</sup> | CO-OP/<br>PRACTICUM <sup>[5]</sup> | PAGE |
|---|---------------------------------|-----------------------|------------------------|----------------------------------|------------------------------------|------|
| DIPLOMA PROGRAMS & ASSOCIATE DEGREES  |                                 |                       |                        |                                  |                                    |      |
| <b>Accounting Technician Diploma</b>  |                                 | 2 years               | Sept/Jan               | Open                             |                                    | 27   |
| <b>Adventure Guide Diploma</b>  |                                 | 2 years               | Sept                   | Limited                          | C                                  | 22   |
| <b>Architectural and Engineering Technology (ARET) Diploma</b>  | ✖                               | 2 years               | Sept                   | Competitive                      | C                                  | 34   |
| <b>Regenerative Agriculture Diploma</b> (Williams Lake Campus only)   | ✖*                              | 2 years               | Sept/Jan/<br>May       | Limited                          | P                                  | 34   |
| <b>Associate of Commerce &amp; Business Administration Diploma</b>  |                                 | 2 years               | Sept/Jan               | Open                             |                                    | 27   |
| <b>Associate of Arts</b>  |                                 | 2 years               | Sept/Jan               | Open                             |                                    | 24   |
| <b>Associate of Science</b>   |                                 | 2 years               | Sept/Jan               | Open                             | C                                  | 33   |
| <b>Computer Network and Cybersecurity Diploma</b>   | ✖                               | 2 years               | Sept                   | Limited                          | C                                  | 34   |
| <b>Computing Science Diploma</b>  | ✖                               | 2 years               | Sept/Jan               | Open                             | C                                  | 33   |
| <b>Construction Electrician</b> (Diploma of Trades) – Pending Approval  | ✖                               | 2 years               | Sept/Jan               | Limited                          |                                    | 35   |
| <b>Early Childhood Education Diploma</b>  | ✖                               | 1.5 years             | Sept                   | Limited                          | P                                  | 29   |
| <b>Events and Conventions Management Diploma</b>  |                                 | 2 years               | Sept                   | Limited                          | C                                  | 22   |
| <b>Horticulture Management Diploma</b>  | ✖*                              | 2 years               | Aug                    | Limited                          | P                                  | 35   |
| <b>Human Service Diploma</b>  | ✖                               | 2 years               | Sept                   |                                  | P                                  | 29   |
| <b>Management Diploma</b>   |                                 | 2 years (60 credits)  | Sept/Jan               | Open                             |                                    | 27   |
| <b>Police &amp; Justice Studies Diploma</b>   |                                 | 2 years (60 credits)  | Sept                   | Limited                          |                                    | 31   |
| <b>Power Engineering Technology Diploma</b>   | ✖                               | 2 years (60 credits)  | Sept                   | Limited                          |                                    | 36   |
| <b>Practical Nursing Diploma</b> (Williams Lake campus only)  | ✖                               | 2 years               | Sept 2026              | Competitive                      | P                                  | 30   |
| <b>Respiratory Therapy Diploma</b>  | ✖                               | 3 years               | Sept                   | Competitive                      | P                                  | 31   |
| <b>Sport Event Management Diploma</b>   |                                 | 2 years (60 credits)  | Sept*                  | Limited                          | C                                  | 22   |
| <b>Tourism Management Diploma</b>   |                                 | 2 years               | Sept/May               | Limited                          | C                                  | 23   |
| <b>Water and Wastewater Technology Diploma</b>  |                                 | 2 years               | Sept                   | Limited                          | C                                  | 36   |
| <b>Wildfire Studies Diploma</b>   | ✖                               | 2 years               | Sept                   | Limited                          |                                    | 35   |
| CERTIFICATE PROGRAMS  |                                 |                       |                        |                                  |                                    |      |
| <b>Adventure Guide Certificate</b>  |                                 | 1 year (30 credits)   | Sept                   | Limited                          |                                    | 23   |
| <b>Health Care Assistant Certificate</b>  | ✖                               | 1 year                | Sept/Jan/<br>May       | Limited                          | P                                  | 30   |
| <b>Professional Cook Level 1 &amp; 2 Certificate</b>  | ✖                               | 1–1.5 years           | Sept/Jan               | Limited                          | P                                  | 23   |
| <b>Horticulture Certificate</b>   | ✖*                              | 1 year                | Aug                    | Limited                          |                                    | 35   |
| <b>Retail Meat Processing Foundation Certificate</b>  | ✖                               | 9 months              | Aug                    | Limited                          | P                                  | 36   |
| <b>Regenerative Agriculture Certificate</b>   | ✖*                              | 1 year                | Sept/Jan/<br>May       | Limited                          |                                    | 34   |
| <b>Teaching English to Speakers of Other Languages (TESOL) Certificate</b>  |                                 | 4 months              | Sept/Jan/<br>May       | Competitive                      |                                    | 29   |
| <b>Water &amp; Wastewater Utilities Certificate</b>   |                                 | 1 year                | Aug                    | Limited                          |                                    | 36   |
| <b>Trades Foundations:</b> <i>Carpenter, Electrician, Heavy Mechanical, Industrial Mechanic (Millwright), Instrumentation and Control Technician Meatcutter, Plumbing and Piping (Plumber), Power Engineering, Refrigeration and Air Conditioning Mechanic, Welding</i> | ✖                               | 8 months              | Varies                 | Limited                          |                                    | 36   |
| UNIVERSITY PREPARATION & STUDENT DEVELOPMENT  |                                 |                       |                        |                                  |                                    |      |
| <b>English for Academic Purposes</b>  |                                 | 4–16 months           | Sept/Jan/<br>May       |                                  |                                    | 18   |

# Programs & Admission Requirements

## Adventure, Culinary Arts and Tourism

| PROGRAM NAME  | MINIMUM REQUIREMENTS   | SAMPLE COURSES   | SAMPLE JOBS  |
|---|--|--|--|
| <b>Post-Baccalaureate Diploma in Tourism Destination Development</b><br><br>Build upon your undergraduate degree with a focus on tourism destination development—for career advancement, career change, professional development or the pursuit of life-long learning. This post- baccalaureate can be completed in two years.<br><br><b>tru.ca/tourism/post-baccalaureate-diplomas</b>   | <ul style="list-style-type: none"><li>• A bachelor's degree</li><li>• All English 12 (73%), or IELTS 6.5, or equivalent</li></ul> <b>Limited seats</b>   | <ul style="list-style-type: none"><li>• Destination Marketing Organizations</li><li>• Community and Cultural Issues in Tourism</li><li>• Tourism and Sustainable Development</li></ul>   | <ul style="list-style-type: none"><li>• Event Coordinator/ Manager</li><li>• Destination Marketing Manager</li><li>• Tourism Development Officer</li></ul>   |
| <b>Bachelor of Tourism Management</b><br><br>Become a leader and manager in the expanding field of tourism. The BTM focuses on key issues in local, regional, national and international tourism, with opportunities for international experience through study abroad and field schools. Gain the skills and confidence to develop your own tourism business and fill industry demand for managers. Exit Certificate after second year: Tourism Management Diploma.<br><br><b>Concentrations:</b> Adventure Studies, Festivals & Events, Innovation & Entrepreneurship, Resort Experience<br><br><b>tru.ca/btm</b> | <ul style="list-style-type: none"><li>• All English 12 (73%) or IELTS 6.5, or equivalent</li><li>• Math 11 (60%) or equivalent</li></ul> <b>Limited seats</b>  | <ul style="list-style-type: none"><li>• Culture, History, and Geography</li><li>• Destination Marketing</li><li>• Hospitality Law</li><li>• People, Places, and the Toured Landscape</li><li>• Environmental Issues in Tourism</li></ul> | <ul style="list-style-type: none"><li>• Tourist Information Centre Manager</li><li>• Travel Agency Manager</li><li>• Hotel Manager</li><li>• Event Organizer</li><li>• Marketing Executive</li></ul> |
| <b>Adventure Guide Diploma</b><br><br>Setting the standard around the world for a broad spectrum of wilderness guide training, this intensive program will prepare you for exciting leadership positions in outdoor skills instruction and guiding. The field portion of your classes access BC's exceptional recreational resources for whitewater and ocean pursuits, climbing and skiing.<br><br><b>tru.ca/adventure</b>   | <ul style="list-style-type: none"><li>• All English 12 (67%) or IELTS 6.5, or equivalent</li><li>• Math 11 (67%) or equivalent</li><li>• Completed Adventure Studies application form</li><li>• 19 years of age by start of program</li></ul> <b>Limited seats</b> | <ul style="list-style-type: none"><li>• Search and Rescue Management</li><li>• Expedition Planning and Leadership</li><li>• The Adventure Tourism Industry</li><li>• The Business of Adventure</li></ul>                                 | <ul style="list-style-type: none"><li>• Ski Instructor</li><li>• Avalanche Technician</li><li>• Hiking Guide</li><li>• SAR Team Member</li><li>• Sea Kayak Guide</li></ul>                           |
| <b>Events &amp; Conventions Management Diploma</b><br><br>Apply your creativity and keen eye for detail toward a career in event management. This program provides a practical overview of the functions, skills and knowledge required to successfully plan, organize, manage, promote and evaluate a festival, convention, tradeshow or special event.<br><br><b>tru.ca/ecm</b>   | <ul style="list-style-type: none"><li>• All English 12 (73%) or IELTS 6.5, or equivalent</li><li>• Math 11 (60%) or equivalent</li></ul> <b>Limited seats</b>  | <ul style="list-style-type: none"><li>• Catering and Service Management</li><li>• Managing Festivals and Events</li><li>• Fundraising for Non-Profit Organizations</li></ul>   | <ul style="list-style-type: none"><li>• Conference Planner</li><li>• Event Planner</li><li>• Festival Organizer</li><li>• Trade Show Planner</li><li>• Convention Coordinator</li></ul>              |
| <b>Sport Event Management Diploma</b><br><br>Develop your business skills and event management expertise. Learn to organize and market sports events, recruit and motivate volunteers, and how to raise funds.<br><br><b>tru.ca/sem</b>   | <ul style="list-style-type: none"><li>• All English 12 (73%) or IELTS 6.5, or equivalent</li><li>• Math 11 (60%) or equivalent</li></ul> <b>Limited seats</b>  | <ul style="list-style-type: none"><li>• The World of Events</li><li>• Staging Special Events</li><li>• Sport Event Marketing</li><li>• Field Experience</li></ul>  | <ul style="list-style-type: none"><li>• Entrepreneur</li><li>• Sports Teams Manager</li><li>• Lifestyle/Sporting Event Coordinator</li><li>• Fundraising/ Marketing Manager</li></ul>                |

|  |   |  |   |
|--|---|--|---|
| <b>Tourism Management Diploma</b><br><br>Explore your options with a two-year diploma that gives you a good sampling of the specialties you can take in tourism management. Students enrolled in Bachelor of Tourism Management who wish to exit the program upon completion of Year 2 can apply for this diploma.<br><br><b>tru.ca/tourism</b>  | <ul style="list-style-type: none"><li>• All English 12 (73%) or IELTS 6.5, or equivalent</li><li>• Math 11 (60%) or equivalent</li></ul> <b>Limited seats</b>   | <ul style="list-style-type: none"><li>• Marketing and Customer Service</li><li>• People, Places, and the Toured Landscape</li><li>• Environmental Issues in Tourism</li></ul>            | <ul style="list-style-type: none"><li>• Event Manager</li><li>• Hotel and Resort Manager</li><li>• Travel Counsellor</li></ul>  |
| <b>Adventure Guide Certificate</b><br><br>This entry-level, eight-month program combines classroom instruction with courses in canoeing, rock climbing, ice climbing, mountaineering, whitewater kayaking and more.<br><br><b>tru.ca/adventure</b>   | <ul style="list-style-type: none"><li>• All English 12 (67%) or IELTS 6.5, or equivalent</li><li>• Math 11 (67%) or equivalent</li><li>• 19 years of age by start of program</li></ul> <b>Limited seats</b> | <ul style="list-style-type: none"><li>• Wilderness Travel</li><li>• Mountaineering/ Skiing</li><li>• Swift Water Rescue Technician</li><li>• Ocean Surfing</li></ul>                     | <ul style="list-style-type: none"><li>• Ski Instructor</li><li>• Sea Kayak Guide</li><li>• Canoe Instructor</li><li>• Raft Guide Technician</li><li>• Ocean Surfing</li></ul> |
| <b>Culinary Arts – Professional Cook 1 &amp; 2 (Red Seal)</b><br><br>Learn the fundamentals and the artistry of food preparation in a hands-on environment that includes practical experience producing international gourmet fare for our on-campus public cafeteria. Earn Professional Cook 1 and 2 certifications in three semesters (44 weeks), with the option to complete a Professional Cook 3 Apprenticeship (Red Seal).<br><br><b>tru.ca/culinary</b> | <ul style="list-style-type: none"><li>• Grade 10, or equivalent</li><li>• Food Safe Level 1</li><li>• Successful Entry Assessment: see tru.ca/assessment</li></ul> <b>Limited seats</b>                     | <ul style="list-style-type: none"><li>• Safety and Sanitary Standards</li><li>• Menu Planning</li><li>• Ingredients and Nutritional Properties</li><li>• Production Procedures</li></ul> | <ul style="list-style-type: none"><li>• Baker</li><li>• Cook/Chef</li><li>• Chocolatier</li><li>• Restaurant Manager</li><li>• Caterer</li></ul>                              |

## Arts, Humanities and Social Science

| PROGRAM NAME   | MINIMUM REQUIREMENTS  | SAMPLE COURSES  | SAMPLE JOBS   |
|--|---|---|---|
| <b>Master of Arts in Human Rights and Social Justice</b><br><br>With TRU's interdisciplinary Master of Arts in Human Rights and Social Justice, you can become a leader in the advancement of a just society—locally and globally.<br><br><b>tru.ca/ma</b>   | <ul style="list-style-type: none"><li>• 3 or 4-year undergraduate degree or equivalent (min GPA 3.33 on a scale of 4.33 in the last 60 credits) in a related discipline such as sociology, political science, history or anthropology</li><li>• Lower GPA may be considered for applicants with related field experience</li><li>• IELTS 7.0, no section below 6.5 or equivalent</li><li>• A Statement of intent</li><li>• CV or resume</li></ul> | <ul style="list-style-type: none"><li>• Law, Human Rights and Theories of Justice</li><li>• Settler Colonialism: Decolonization and Responsibility</li><li>• Problem Solving in the Field: Study Techniques and Methods</li><li>• Body Rights: Systems and Social Movements</li></ul> | <ul style="list-style-type: none"><li>• Provincial, national, or international NGOs</li><li>• Various levels of government</li><li>• Private sector companies adhering to corporate social responsibility</li></ul> |
| <b>Post-Baccalaureate Diploma in Politics and International Studies</b><br><br>Develop an appreciation and understanding of the ways in which economic and political phenomena shape our society. Learn how to apply a quantitative analysis of economics to assess the effectiveness of our modern laws and policies. | <ul style="list-style-type: none"><li>• Third-year entry or Bachelor's degree (any field)</li><li>• All English 12 (73%) or IELTS 6.5, no section below 6.0</li></ul> <b>Competitive admission</b>  | <ul style="list-style-type: none"><li>• Introduction to Cultural Anthropology</li><li>• Canadian Foreign Policy</li><li>• Globalization</li><li>• Environmental Issues and Policies</li></ul>   | <ul style="list-style-type: none"><li>• Social policy researchers</li><li>• Managers in social, community and correctional services</li><li>• Marketing researchers and consultant</li></ul>                        |

|   |   |  |   |
|---|---|--|---|
| <p><b>Bachelor of Arts</b></p> <p>The BA degree offers a variety of majors and minors while ensuring a comprehensive foundation in the liberal arts. Flexible with opportunities for research, Co-op, field schools and study abroad. Cultivate skills like communication, critical thinking, teamwork and leadership, and apply your knowledge in real-world settings.</p> <p><b>Majors:</b> Applied Creative Arts, Economics, Economics &amp; Math, Economics &amp; Political Studies, English, Geography &amp; Environmental Studies, History, Math, Philosophy, Psychology, Sociology</p> <p><b>Minors:</b> Creative Writing, Environmental Economics &amp; Sustainable Development, Geography, Management, Political Studies</p> <p><b>tru.ca/ba</b></p> | <ul style="list-style-type: none"><li>• All English 12 (73%) or IELTS 6.5, or equivalent</li></ul>  | <ul style="list-style-type: none"><li>• Introduction to Psychology</li><li>• Race and Ethnic Relations</li><li>• Labour Economics</li><li>• Social and Political Thought</li></ul> | <ul style="list-style-type: none"><li>• Project Coordinator</li><li>• Researcher</li><li>• Public Relations Specialist</li><li>• Teacher</li><li>• Counsellor</li><li>• Communications Specialist</li><li>• Actor</li><li>• Historian</li></ul> |
| <p><b>Bachelor of Communication and Digital Journalism</b></p> <p>Embrace studies in public and strategic communication, media relations, media and technology, multimedia storytelling, digital journalism, visual communication, and digital design. With this degree, you will be ready to navigate flexible opportunities as a digital journalist, a public relations specialist, a media analyst or a content producer.</p> <p><b>Majors:</b> Digital Journalism, Public Relations, Media Studies</p> <p><b>tru.ca/bcdj</b></p>  | <ul style="list-style-type: none"><li>• All English 12 (73%) or IELTS 6.5, or equivalent</li></ul>  | <ul style="list-style-type: none"><li>• Advanced Professional Communication</li><li>• Introduction to Reporting Skills and Techniques</li><li>• Online Journalism</li></ul>        | <ul style="list-style-type: none"><li>• Digital journalist</li><li>• Public relations specialist</li><li>• Media analyst</li><li>• Content producer</li></ul>   |
| <p><b>Bachelor of Interdisciplinary Studies</b></p> <p>Explore your interests without concentrating in a specific major in the BIS degree program. Find your passions through a varied learning experience and customize your curriculum, with opportunities for co-op.</p> <p><b>tru.ca/bis</b></p>  | <ul style="list-style-type: none"><li>• Third-year entry</li><li>• All English 12 (73%) or IELTS 6.5, or equivalent</li></ul> <p><b>Competitive admission</b></p> | <ul style="list-style-type: none"><li>• Courses will vary depending on your interests.</li></ul>   | <ul style="list-style-type: none"><li>• Job options are endless depending on your choice of courses.</li></ul>  |



Business, Economics and Management

| PROGRAM NAME  | MINIMUM REQUIREMENTS  | SAMPLE COURSES   | SAMPLE JOBS  |
|---|---|--|--|
| <p><b>Master of Business Administration</b></p> <p>The TRU MBA is designed to meet the needs of our students who can customize their learning experience with maximum flexibility and unparalleled choice. Three program completion options: graduate project, graduate thesis and course-based completion project.</p> <p><b>tru.ca/mba</b></p>  | <ul style="list-style-type: none"><li>• 3 or 4-year undergraduate degree or equivalent (min GPA 3.0 on a scale of 4.33 in the last 60 credits)</li><li>• IELTS 7.0, no section below 6.5 or equivalent</li></ul> <p><b>Competitive admission</b></p>  | <ul style="list-style-type: none"><li>• Strategic Management</li><li>• Decision Analysis and Management</li><li>• Innovation and Entrepreneurship</li><li>• Research Methods, Preparation and Presentation</li></ul>   | <ul style="list-style-type: none"><li>• Management Consultant</li><li>• Investment Banker</li><li>• Management Analyst</li><li>• Marketing Manager</li></ul>   |
| <p><b>Master of Environmental Economics and Management</b></p> <p><b>or</b></p> <p><b>Master of Science in Environmental Economics and Management</b></p> <p>A course-based program providing graduates with a broad knowledge of the business environment, advanced management skills and specialized knowledge in environmental economics and sustainability.</p> <p>MScEEM will complete their studies through a graduate thesis or project.</p> <p><b>tru.ca/meem</b></p> | <ul style="list-style-type: none"><li>• 3 or 4-year undergraduate degree or equivalent (min GPA 3.0 on a scale of 4.33 in the last 60 credits)</li><li>• IELTS 7.0, no section below 6.5 or equivalent</li><li>• Interview and 2 references required (TRU to provide forms)</li><li>• Quantitative and computing skills</li><li>• Letter of intent and CV</li></ul> <p><b>Competitive admission</b></p> | <ul style="list-style-type: none"><li>• Policy and Regulation for Sustainable Management</li><li>• Principles of Environmental Economics and Natural Resource Economics</li><li>• Applied Macroeconomics for Sustainable Management</li><li>• Sustainable Macroeconomic Development</li><li>• Sustainable Community Economic Development</li></ul> | <ul style="list-style-type: none"><li>• Commodities Broker</li><li>• Environmental Coordinator</li><li>• Sustainability Manager</li><li>• Environmental Technical Salesperson</li><li>• Energy Auditor</li><li>• Environmental Planner</li></ul> |
| <p><b>Post-Baccalaureate Diploma in Accounting</b></p> <p>Enables students to create, examine and evaluate financial documents. Students will complete a variety of courses such as statistics, income taxation, economics, financial accounting and management accounting.</p> <p><b>tru.ca/business/post-bacc</b></p>   | <ul style="list-style-type: none"><li>• All English 12 (73%) or IELTS 6.5, or equivalent</li><li>• Math 12 or MATH 0610 or MATH 1000 (67%) or equivalent</li><li>• ENGL 1100 (67%) or equivalent</li><li>• A bachelor's degree</li></ul>  | <ul style="list-style-type: none"><li>• Advanced Financial Accounting</li><li>• Assurance</li><li>• Intermediate Management Accounting</li></ul>   | <ul style="list-style-type: none"><li>• Machine Processing Accountant</li><li>• Tax Analyst</li><li>• Financial Control Officer</li></ul>  |
| <p><b>Post-Baccalaureate Diploma in Business Administration</b></p> <p>Prepares mature students with a general business or non-business degree to build a strong foundation in all areas of business.</p> <p><b>tru.ca/business/post-bacc</b></p>   | <ul style="list-style-type: none"><li>• All English 12 (73%) or IELTS 6.5, or equivalent</li><li>• Math 12 or MATH 0610 or MATH 1000 (67%) or equivalent</li><li>• ENGL 1100 (67%) or equivalent</li><li>• A bachelor's degree</li></ul>  | <ul style="list-style-type: none"><li>• Management Information Systems</li><li>• Commercial Law</li><li>• Strategic Management</li></ul>   | <ul style="list-style-type: none"><li>• Appraiser</li><li>• Commercial Lender</li><li>• Merchandising Technician</li></ul>   |
| <p><b>Post-Baccalaureate Diploma in Economics</b></p> <p>Students acquire essential knowledge of Canadian financial markets, economic analysis, forecasting, sustainable economic development, public finance and other disciplines that prepare students to become professionals in the economics sector.</p> <p><b>tru.ca/business/post-bacc</b></p>  | <ul style="list-style-type: none"><li>• All English 12 (73%) or IELTS 6.5, or equivalent</li><li>• Math 12 or MATH 0610 or MATH 1000 (67%) or equivalent</li><li>• ENGL 1100 (67%) or equivalent</li><li>• A bachelor's degree</li></ul>  | <ul style="list-style-type: none"><li>• Economics of Climate Change</li><li>• International Economics</li><li>• Government and Business</li><li>• International Financial Markets</li></ul>  | <ul style="list-style-type: none"><li>• Researching and analyzing data and trends</li><li>• Municipal sector</li><li>• Banks</li><li>• Private sector</li></ul>  |

|   |  |  |   |
|---|--|--|---|
| <p><b>Post-Baccalaureate Diploma in Entrepreneurship</b></p> <p>Entrepreneurship majors will learn to research new business ideas, prepare formal business plans, secure initial financing and manage small businesses on an ongoing basis.</p> <p><b>tru.ca/business/post-bacc</b></p>   | <ul style="list-style-type: none"><li>• All English 12 (73%) or IELTS 6.5, or equivalent</li><li>• Math 12 or MATH 0610 or MATH 1000 (67%) or equivalent</li><li>• ENGL 1100 (67%) or equivalent</li><li>• A bachelor’s degree</li></ul> | <ul style="list-style-type: none"><li>• All Business Finance</li><li>• New Venture Creation</li><li>• Small Business Management</li></ul>  | <ul style="list-style-type: none"><li>• Commercial Lending Officer</li><li>• Venture Capitalist</li><li>• Franchisee</li></ul>  |
| <p><b>Post-Baccalaureate Diploma in Finance</b></p> <p>Students acquire a foundation in finance-related subjects including financial management, financial accounting, investments and equity analysis.</p> <p><b>tru.ca/business/post-bacc</b></p>   | <ul style="list-style-type: none"><li>• All English 12 (73%) or IELTS 6.5, or equivalent</li><li>• Math 12 or MATH 0610 or MATH 1000 (67%) or equivalent</li><li>• ENGL 1100 (67%) or equivalent</li><li>• A bachelor’s degree</li></ul> | <ul style="list-style-type: none"><li>• Risk Management and Financial Engineering</li><li>• Portfolio Management</li><li>• Forecasting in Business and Economics</li></ul>   | <ul style="list-style-type: none"><li>• Financial Auditor</li><li>• Financial and Investment Analyst</li><li>• Securities Agent</li></ul>   |
| <p><b>Post-Baccalaureate Diploma in Human Resource Management</b></p> <p>Topics include leadership, teamwork in organizations, planning and staffing, employment law and organizational development.</p> <p><b>tru.ca/business/post-bacc</b></p>  | <ul style="list-style-type: none"><li>• All English 12 (73%) or IELTS 6.5, or equivalent</li><li>• Math 12 or MATH 0610 or MATH 1000 (67%) or equivalent</li><li>• ENGL 1100 (67%) or equivalent</li><li>• A bachelor’s degree</li></ul> | <ul style="list-style-type: none"><li>• Creativity and Innovation</li><li>• Human Resource Management</li><li>• Negotiation and Conflict Resolution</li></ul>  | <ul style="list-style-type: none"><li>• Recruiting Manager</li><li>• Director of Employee Engagement</li><li>• Branch Manager</li></ul>   |
| <p><b>Post-Baccalaureate Diploma in Economics and Political Studies</b></p> <p><b>tru.ca/business/post-bacc</b></p>   | <ul style="list-style-type: none"><li>• All English 12 (73%) or IELTS 6.5, or equivalent</li><li>• Math 12 or MATH 0610 or MATH 1000 (67%) or equivalent</li><li>• ENGL 1100 (67%) or equivalent</li><li>• A bachelor’s degree</li></ul> | <ul style="list-style-type: none"><li>• Canadian Financial Markets</li><li>• Government and Business</li><li>• Canadian Foreign Policy</li><li>• Economic Analysis of Law</li></ul>                                | <ul style="list-style-type: none"><li>• Municipal sector</li><li>• Banks</li><li>• Private sector</li></ul>   |
| <p><b>Post-Baccalaureate Diploma in International Business</b></p> <p>Prepares students for positions as managers and entrepreneurs in the global economy.</p> <p><b>tru.ca/business/post-bacc</b></p>  | <ul style="list-style-type: none"><li>• All English 12 (73%) or IELTS 6.5, or equivalent</li><li>• Math 12 or MATH 0610 or MATH 1000 (67%) or equivalent</li><li>• ENGL 1100 (67%) or equivalent</li><li>• A bachelor’s degree</li></ul> | <ul style="list-style-type: none"><li>• Global Management</li><li>• International Trade Law and Logistics</li><li>• Global Entrepreneurship</li></ul>  | <ul style="list-style-type: none"><li>• Foreign Affairs Specialist</li><li>• Corporate Trainer</li><li>• International Account Manager</li></ul>  |
| <p><b>Post-Baccalaureate Diploma in Marketing</b></p> <p>Students acquire a foundation in marketing-related subjects including consumer behaviour, marketing research, strategy, e-commerce, professional selling, brand management and forecasting.</p> <p><b>tru.ca/business/post-bacc</b></p>  | <ul style="list-style-type: none"><li>• All English 12 (73%) or IELTS 6.5, or equivalent</li><li>• Math 12 or MATH 0610 or MATH 1000 (67%) or equivalent</li><li>• ENGL 1100 (67%) or equivalent</li><li>• A bachelor’s degree</li></ul> | <ul style="list-style-type: none"><li>• Advanced Marketing Research</li><li>• International Marketing</li><li>• Services Marketing</li></ul>   | <ul style="list-style-type: none"><li>• Digital Marketing Manager</li><li>• Campaign Manager</li><li>• Marketing Director</li></ul>   |
| <p><b>Post-Baccalaureate Diploma in Mathematics and Economics</b></p> <p>This diploma is of interest to students who have a non-business degree and want to return to university for one or two years to acquire a specialty in a functional area of business. Students with a first degree in business, but who want to change their area of focus, may complete a post-baccalaureate diploma as well.</p> <p><b>tru.ca/business/post-bacc</b></p> | <ul style="list-style-type: none"><li>• All English 12 (73%) or IELTS 6.5, or equivalent</li><li>• Math 12 or MATH 0610 or MATH 1000 (67%) or equivalent</li><li>• ENGL 1100 (67%) or equivalent</li><li>• A bachelor’s degree</li></ul> | <ul style="list-style-type: none"><li>• Econometrics</li><li>• Introduction to Linear Programming</li><li>• Modelling of Discrete</li><li>• Optimization Problems</li><li>• Applied Regression Analytics</li></ul> | <ul style="list-style-type: none"><li>• Economist</li><li>• Financial Risk Analyst</li><li>• Data Analyst</li><li>• Financial Planner</li><li>• Economic Researcher</li><li>• Financial Consultant</li><li>• Investment Analyst</li></ul> |

|   |  |   |   |
|---|--|---|---|
| <p><b>Post-Baccalaureate Diploma in Supply Chain Management</b></p> <p>Program focuses on fundamental aspects of supply chain management like logistics and transportation, operations management, commercial law and global management.</p> <p><b>tru.ca/business/post-bacc</b></p>  | <ul style="list-style-type: none"><li>• All English 12 (73%) or IELTS 6.5, or equivalent</li><li>• Math 12 or MATH 0610 or MATH 1000 (67%) or equivalent</li><li>• ENGL 1100 (67%) or equivalent</li><li>• A bachelor’s degree</li></ul> | <ul style="list-style-type: none"><li>• Web-Enabled Business</li><li>• Operations Management</li><li>• Procurement Management</li></ul>   | <ul style="list-style-type: none"><li>• Business Development Manager</li><li>• Inventory Manager</li><li>• Manufacturing Manager</li></ul>  |
| <p><b>Bachelor of Business Administration</b></p> <p>Gain a foundation in business in the first two years of the flexible BBA program, then find your passion in a choice of majors and minors. Co-op and study abroad opportunities are available to enhance your career options. Double degree option with Computing Science is available.</p> <p><b>Majors:</b> Accounting, Economics, Entrepreneurship, Finance, Human Resource Management, International Business, Marketing, Supply Chain Management</p> <p><b>Minors:</b> Environmental Economics &amp; Sustainable Development, Financial Markets &amp; Institutions, Financial Services, Leadership, Management Information Systems, Project Management</p> <p><b>tru.ca/bba</b></p> <p><b>Double Degrees:</b> Bachelor of Business Administration (BBA) and Bachelor of Computing Science (BCS), Bachelor of Business (BBA) and Bachelor of Arts (BA)</p> <p><b>tru.ca/business/degrees/double_degree</b></p> | <ul style="list-style-type: none"><li>• All English 12 (73%) or IELTS 6.5, or equivalent</li><li>• Math 12 (67%) or equivalent</li></ul>   | <ul style="list-style-type: none"><li>• International Marketing</li><li>• Small Business Management</li><li>• Logistics and Operations</li><li>• Macro and Micro Economics</li><li>• Financial Accounting</li><li>• Employment Law</li><li>• Global Entrepreneurship</li><li>• Consumer Behaviour</li></ul> | <ul style="list-style-type: none"><li>• Taxation Manager</li><li>• Investment Dealer</li><li>• Industrial Relations Officer</li><li>• Foreign Trade Consultant</li><li>• Advertising Account Executive</li><li>• Venture Capitalist</li><li>• Supply Chain System Manager</li></ul> |
| <p><b>Accounting Technician Diploma</b></p> <p>Develop the skills to become an accounting para-professional working alongside professional accountants in industry and public practice. Your diploma credits count towards completion of the Bachelor of Business Administration.</p> <p><b>Exit Certificate after first year: Business Foundations Certificate</b></p> <p><b>tru.ca/accounting</b></p>   | <ul style="list-style-type: none"><li>• All English 12 (73%) or IELTS 6.5, or equivalent</li><li>• Math 12 (67%) or equivalent</li><li>• Completion of Administrative Assistant Certificate, or equivalent</li></ul>                     | <ul style="list-style-type: none"><li>• Financial Management</li><li>• Income Taxation</li><li>• Accounting 1 &amp; 2</li><li>• Introduction to Probability and Statistics</li></ul>  | <ul style="list-style-type: none"><li>• Secretary</li><li>• Sales Assistant</li><li>• Administrative Assistant</li><li>• Research Assistant</li></ul>   |
| <p><b>Associate of Commerce &amp; Business Administration Diploma</b></p> <p>This diploma allows you to complete the lower level requirements of a business degree at TRU, before transferring to another university such as Simon Fraser University or University of British Columbia for your third and fourth years.</p> <p><b>tru.ca/business/certificates_diplomas</b></p>   | <ul style="list-style-type: none"><li>• All English 12 (73%) or IELTS 6.5, or equivalent</li><li>• Math 12 (67%) or equivalent</li><li>• Completion of Administrative Assistant Certificate, or equivalent</li></ul>                     | <ul style="list-style-type: none"><li>• Economics</li><li>• Financial Accounting</li><li>• Organizational Behaviour</li></ul>   | <ul style="list-style-type: none"><li>• Administrative Assistant</li><li>• Sales Coordinator</li><li>• Office Clerk</li></ul>   |
| <p><b>Management Diploma</b></p> <p>Develop your skills in areas such as accounting, oral and written communications, problem-solving, marketing, human relations, economics, information systems and business ethics.</p> <p>Your diploma credits count towards completion of the Bachelor of Business Administration.</p> <p><b>Exit Certificate after first year: Business Foundations Certificate</b></p> <p><b>tru.ca/mgmt</b></p>   | <ul style="list-style-type: none"><li>• All English 12 (73%) or IELTS 6.5, or equivalent</li><li>• Math 12 (67%) or equivalent</li></ul> <p><b>Upgrading available while in the program</b></p>  | <ul style="list-style-type: none"><li>• Organizational Behaviour</li><li>• Employee and Labour Relations</li><li>• International Business</li></ul>   | <ul style="list-style-type: none"><li>• Customer Relations Coordinator</li><li>• Insurance Clerk</li><li>• Cost Administrator</li><li>• Employment Counsellor</li></ul>   |

Education, Social Work, and Human Services

| PROGRAM NAME   | MINIMUM REQUIREMENTS   | SAMPLE COURSES   | SAMPLE JOBS  |
|--|--|--|--|
| <p><b>Master of Education</b></p> <p>The Master of Education program is designed for the working professional involved in education and for students who wish to assume positions as educational leaders and researchers, or who work in education, health care, private industry and government.</p> <p>Consisting of five core courses plus five courses from one focus subject such as educational leadership, curriculum, counselling, or inclusive and special education. The MEd is completed through a capstone course, though it is possible to complete the program by final project or thesis if a supervisor is available.</p> <p><b>tru.ca/med</b></p> | <ul style="list-style-type: none"><li>• 3 or 4-year undergraduate degree or equivalent (min GPA 3.0 on a scale of 4.33 in the last 60 credits)</li><li>• IELTS 6.5, no section below 6.5 or equivalent</li></ul> <p><b>Limited seats</b></p>   | <ul style="list-style-type: none"><li>• Legal Issues in Education</li><li>• Multimedia in the Curriculum</li><li>• Theories in Counselling</li><li>• Intervention and Programming in Inclusive Education</li></ul>       | <ul style="list-style-type: none"><li>• Instructional Technologist</li><li>• Educational Superintendent</li><li>• Counsellor</li><li>• Academic Dean</li></ul>                                       |
| <p><b>Graduate Certificate in Educational Studies</b></p> <p>The Graduate Certificate in Educational Studies (GCES) is designed to help develop the English language and academic skills to successfully meet the MEd entry requirements.</p> <p><b>tru.ca/edsw/education/gces</b></p>   | <ul style="list-style-type: none"><li>• 3 or 4-year undergraduate degree or equivalent (min GPA 2.67 on a scale of 4.33 in the last 60 credits)</li><li>• IELTS 6.0, no section below 5.5 or equivalent</li><li>• 3 references and letter of intent</li></ul>  | <ul style="list-style-type: none"><li>• Legal Issues in Education</li><li>• Multimedia in the Curriculum</li><li>• Theories in Counselling</li><li>• Intervention and Programming in Inclusive Education</li></ul>       | <ul style="list-style-type: none"><li>• Instructional Technologist</li><li>• Educational Superintendent</li><li>• Counsellor</li><li>• Academic Dean</li></ul>                                       |
| <p><b>Bachelor of Education – Elementary</b></p> <p>This two-year program prepares students to teach in elementary schools. Graduates obtain their professional teaching certificate from the Ministry of Education, Teacher Regulation Branch (TRB), which qualifies the graduate to teach kindergarten to grade 12 in BC public schools. Graduates can also teach in any province or territory in Canada, and in many other countries.</p> <p><b>tru.ca/edb</b></p>  | <ul style="list-style-type: none"><li>• Must be graduate of a four year degree or equivalent (min GPA 2.67 in last 60 credits) normally in arts, fine arts, math, science, music or physical education</li><li>• 100 hours volunteer experience</li><li>• All English 12 (73%) or IELTS 6.5, or equivalent</li></ul> <p><b>Competitive admission</b></p>   | <ul style="list-style-type: none"><li>• History of Education</li><li>• Language and Literacy</li><li>• Mathematics</li><li>• Special Education</li><li>• Visual Arts</li><li>• School Organization</li></ul>             | <ul style="list-style-type: none"><li>• Primary School Teacher</li><li>• Youth Worker</li><li>• Community Education Officer</li><li>• Education Administrator</li><li>• Teaching Assistant</li></ul> |
| <p><b>Bachelor of Education – Secondary (STEM)</b></p> <p>This one-year (12-month) program prepares students to teach science and mathematics in the context of engineering and technology in secondary school settings. Graduates qualify for a professional teaching certificate from the BC Ministry of Education, Teacher Regulation Branch (TRB), certifying them to teach science and mathematics subjects in any secondary school setting. Graduates often teach in other provinces or territories in Canada and in other countries.</p> <p><b>tru.ca/stem</b></p>  | <ul style="list-style-type: none"><li>• 3 or 4-year undergraduate degree or equivalent</li><li>• in mathematics or science (Physics, Biology, Chemistry, or General Science) with a 2.67 GPA in the last 60 credits.</li><li>• One teachable major or two teachable minors (courses taught in secondary schools)</li><li>• Successful completion of six credits of English Literature and Composition at any level</li><li>• 100 hours of relevant volunteer or paid teaching experience</li></ul> <p><b>Competitive admission</b></p> | <ul style="list-style-type: none"><li>• History of Education</li><li>• Philosophy of Education</li><li>• Diversity and Inclusive Education</li><li>• Legal Issues</li><li>• Management of Technical Facilities</li></ul> | <ul style="list-style-type: none"><li>• High School Science Teacher</li><li>• Education Administrator</li></ul>  |

|  |   |   |   |
|--|---|---|---|
| <p><b>Bachelor of Social Work</b></p> <p>Learn the skills you need for a rewarding career as a generalist social work practitioner in various fields of practice, such as child welfare, mental health, addictions, women's services, family justice, corrections, health and Indigenous people. The BSW program has an orientation toward social justice, and respect for diversity and social change.</p> <p><b>tru.ca/bsw</b></p> | <ul style="list-style-type: none"><li>• Third year entry</li><li>• A minimum of 54 credits (60 recommended) with a min GPA of 2.33</li><li>• Human Service diploma or certificate with a minimum GPA of 2.67</li><li>• English 12 (73%) or IELTS6.5 or equivalent</li></ul> <p><b>Limited seats</b></p> | <ul style="list-style-type: none"><li>• Theory and Ideology of Social Work</li><li>• Sexual Diversity and Gender Expression</li><li>• Introduction to Disability Studies</li><li>• Family Violence and Social Work Practices</li></ul>  | <ul style="list-style-type: none"><li>• School Social Worker</li><li>• Child Welfare Social Worker</li><li>• Mental Health Social Worker</li><li>• Substance Abuse Social Worker</li></ul>  |
| <p><b>Early Childhood Education Diploma</b></p> <p>This program provides excellent learning techniques to acquire necessary knowledge and skills to become educators. Completion of ECE Diploma satisfies the requirements of CCFB and BC Government for a license to practice as an Early Childhood Educator.</p> <p><b>tru.ca/ece</b></p>  | <ul style="list-style-type: none"><li>• All English 12 (73%) or IELTS 6.5, or equivalent</li><li>• 25 hours of volunteer and/or work experience in a licensed childcare facility</li></ul> <p><b>Limited seats</b></p>  | <ul style="list-style-type: none"><li>• Child Guidance</li><li>• Introduction to Developmental Psychology: Childhood &amp; Adolescence</li><li>• Curriculum Development</li></ul>   | <ul style="list-style-type: none"><li>• Early Childhood Educator</li><li>• Special Needs Educator</li><li>• Early Literacy Specialist</li></ul>   |
| <p><b>Human Service Diploma</b></p> <p>Prepare for a helping career with agencies that provide support and assistance to individuals coping with economic disadvantage, mental health issues, developmental, gender and diversity issues, addictions and other challenges. Your certificate credits count towards completion of child and youth care or social work degree programs.</p> <p><b>tru.ca/humanservice</b></p>           | <ul style="list-style-type: none"><li>• All English 12 (73%) or IELTS 6.5, or equivalent</li><li>• Must be 19 years of age before start of program</li><li>• Criminal record check from home country</li></ul>  | <ul style="list-style-type: none"><li>• Introduction to Communications and Helping Relationships</li><li>• Family and Marriage</li><li>• Introduction to First Nations</li><li>• Introduction to Social Work Practice</li><li>• Law and Social Services</li><li>• Advanced Interpersonal Skills/Guided Communications</li></ul> | <ul style="list-style-type: none"><li>• Work with government or non-profit agencies to support individuals and families with diverse social needs such as economic disadvantage, mental health</li><li>• and substance use issues, and</li><li>• involvement with the justice system.</li></ul> |
| <p><b>TESOL Certificate</b></p> <p>Get the knowledge, skills and confidence to start a career teaching English as a second language in Canada or around the world.</p> <p>Teaching English is a great way to collect unforgettable experiences, be in high demand and make a real difference in people's lives.</p> <p>Our program is nationally accredited by TESL Canada.</p> <p><b>tru.ca/tesl</b></p>                            | <ul style="list-style-type: none"><li>• IELTS 6.5, no section below 6.5 or equivalent</li></ul>   | <ul style="list-style-type: none"><li>• Curriculum and Instruction</li><li>• Pedagogical Grammar</li><li>• Intercultural Communication Studies</li><li>• TESOL Techniques</li><li>• TESOL Practicum</li></ul>   | <ul style="list-style-type: none"><li>• Program Administrator</li><li>• Program Coordinator</li><li>• Develop and write curricula</li><li>• Teach at universities and colleges</li><li>• Teach globally</li></ul>   |



## Health Sciences and Nursing

| PROGRAM NAME  | MINIMUM REQUIREMENTS  | SAMPLE COURSES  | SAMPLE JOBS  |
|---|---|---|--|
| <p><b>Master of Nursing</b></p> <p>The MN program offers nursing graduates the knowledge, skills and abilities they need for principled and thoughtful leadership through critical and creative approaches that influence innovative change. Graduates will be equipped to meet the demand for advanced nursing roles within complex and dynamic health care systems internationally.</p> <p><b>tru.ca/mn</b></p>   | <ul style="list-style-type: none"><li>• 3 or 4-year undergraduate degree or equivalent (min GPA 3.0 on a scale of 4.33 in the last 60 credits) preferably in nursing</li><li>• Introductory Statistics 12 (or equivalent) C+</li><li>• Two letters of reference (one academic and one professional)</li><li>• Verification of registration as an active practicing nurse from the regulatory body of the jurisdiction where you live</li><li>• IELTS 7.0, no section below 6.5 or equivalent. Preferred scores: Speaking 7.0, Writing 7.0, Listening 7.5, Reading 6.5</li></ul> <p><b>Competitive admission</b></p> | <ul style="list-style-type: none"><li>• Knowledge for Advanced Nursing</li><li>• Research in Healthcare</li><li>• Leadership and Managing Change in Healthcare</li></ul>                      | <ul style="list-style-type: none"><li>• Research Nurse</li><li>• Nurse Educator</li><li>• Health Care Administrator</li></ul>  |
| <p><b>Bachelor of Science in Nursing</b></p> <p>This four-year degree program (plus practicum placements) educates students to be competent nurses to work with individuals, families, groups or communities from a health promotion perspective and an ethic of caring. Practice experience occurs in acute care, extended care and intermediate care hospitals, and other community health agencies and homes with options for local, regional, provincial, national and international practicums. Upon completion, graduates are eligible to write the National Council Licensure Examination (NCLEX) and apply for registration with the College of Registered Nurses of BC (CRNBC) to practice as a Registered Nurse (RN).</p> <p><b>tru.ca/nursing/programs/bsn</b></p> | <ul style="list-style-type: none"><li>• All English 12 (73%) or IELTS 6.5, or equivalent</li><li>• Foundations of Math 12 or Pre-Calculus 12 (67%) or equivalent</li><li>• Biology 12 (67%) or equivalent</li><li>• Chemistry 11 (67%) or equivalent</li><li>• One additional Science 11 or Science 12 with a minimum (67%) or equivalent</li><li>• CASPer test</li></ul> <p><b>Competitive admission</b><br/><b>Application Deadline</b><br/><b>January 15</b></p>   | <ul style="list-style-type: none"><li>• Health and Healing</li><li>• Composition</li><li>• Health Care Ethics</li><li>• Consolidated Practice Experience</li><li>• Nursing Research</li></ul> | <ul style="list-style-type: none"><li>• Medical Intensive Care Nurse</li><li>• Advanced Nurse Practitioner</li><li>• Acute Care Nurse Practitioner</li><li>• Nurse Educator</li><li>• Registered Nurse</li></ul>                             |
| <p><b>Health Care Assistant Certificate</b></p> <p>Acquire the practical skills and knowledge to support patient care in hospitals, long-term care and community settings. Training includes vital-sign monitoring, personal care, safe patient handling, infection prevention, and communication with care teams.</p> <p><b>tru.ca/hca</b></p>   | <ul style="list-style-type: none"><li>• All English 12 (67%) or IELTS 6.5, or equivalent</li><li>• Foundations of Math 11 (60%) or equivalent</li><li>• Human Anatomy and Physiology for Practical Nurses (67%) or equivalent</li></ul>   |   | <ul style="list-style-type: none"><li>• Health Care Assistant (HCA)</li><li>• Resident Care Aide</li><li>• Home Support Worker</li><li>• Hospital Unit Assistant</li><li>• Long-Term Care Aide</li><li>• Palliative Care Assistant</li></ul> |
| <p><b>Practical Nursing Diploma</b></p> <p>Learn everything you need to deliver effective and empathetic front line patient care. This comprehensive program provides the knowledge, skills, judgement and attitude to perform to the competencies identified by the College of Licensed Practical Nurses of British Columbia.</p> <p>(Williams Lake Campus only)</p> <p><b>tru.ca/nursing/programs/lpn</b></p>   | <ul style="list-style-type: none"><li>• All English 12 (67%) or IELTS 6.5, or equivalent</li><li>• Foundations of Math 11 (60%) or equivalent</li><li>• Human Anatomy and Physiology for Practical Nurses (67%) or equivalent</li></ul> <p><b>Next intake:</b><br/><b>September 2026</b></p>  | <ul style="list-style-type: none"><li>• Anatomy and Physiology</li><li>• Professional Practice</li><li>• Health and Healing</li><li>• Nursing Practice</li></ul>                              | <ul style="list-style-type: none"><li>• Ambulance Care Aid</li><li>• Geriatric Nurse</li><li>• Pediatric Nurse</li><li>• Operating Room Nurse</li></ul>  |

|   |   |  |   |
|---|---|--|---|
| <p><b>Respiratory Therapy Diploma</b></p> <p>This three-year diploma trains you as a therapist specializing in cardiopulmonary disease prevention and education. Learn to assess and treat disorders of the lungs, heart, and vascular system. Includes a one-year clinical at various hospitals.</p> <p><b>tru.ca/rt</b></p> | <ul style="list-style-type: none"><li>• All English 12 (73%) or IELTS 6.5, or equivalent</li><li>• Foundations of Math 12 or Pre-Calculus 12 (67%) or equivalent</li><li>• Biology 12 (67%) or equivalent</li><li>• Chemistry 12 (67%) or equivalent</li><li>• Physics 11 (67%) or equivalent</li></ul> <p><b>Competitive admission</b></p> | <ul style="list-style-type: none"><li>• Mechanical Ventilation</li><li>• Patient Assessment</li><li>• Anesthesia</li><li>• Assessment and Interventions</li><li>• in Multisystem Disorders</li><li>• General Pathophysiology</li></ul> | <ul style="list-style-type: none"><li>• Respiratory Therapist</li><li>• Radiological Technologist</li><li>• Health Sciences Educator</li><li>• Clinical Education/ Application Specialist</li></ul> |
|---|---|--|---|

## Law and Justice

| PROGRAM NAME  | MINIMUM REQUIREMENTS   | SAMPLE COURSES  | SAMPLE JOBS   |
|---|--|---|---|
| <p><b>Law – Juris Doctor</b></p> <p>Obtain a dynamic legal education with a three-year, full-time Juris Doctor degree program. Understand law, master the realities of practice and be prepared to serve the profession of law and the interests of justice. Opportunities include competitive mootng, an international law journal, a legal information service and student- run initiatives.</p> <p><b>tru.ca/law</b></p> | <ul style="list-style-type: none"><li>• A bachelor’s degree</li><li>• LSAT score</li><li>• Personal statement</li><li>• 3 references</li><li>• IELTS 7.0, no section below 7.0 or equivalent</li></ul> <p><b>Competitive admission</b><br/><b>Application Deadline</b><br/><b>February 1</b></p> | <ul style="list-style-type: none"><li>• Advanced Legal Research</li><li>• Ethical Lawyering</li><li>• Alternate Dispute Resolution</li><li>• Evidence</li><li>• Civil Procedure</li></ul>   | <ul style="list-style-type: none"><li>• Research Lawyer</li><li>• Public Defender</li><li>• Judge</li><li>• Contract Negotiator</li><li>• Plaintiff Attorney</li><li>• Corporate Lawyer</li></ul>           |
| <p><b>Police &amp; Justice Studies Diploma</b></p> <p>This two-year program will prepare you for the challenges of a career in policing, as well as in corrections, parole, customs, and other government services at the federal, provincial or municipal levels. Your diploma credits count towards completion of an arts, business or criminology degree.</p> <p><b>tru.ca/pjs</b></p>                                   | <ul style="list-style-type: none"><li>• All English 12 (73%) or IELTS 6.5, or equivalent</li><li>• Any Math 11</li><li>• Statement of Career Objectives</li><li>• Resume</li></ul> <p><b>Limited seats</b></p>   | <ul style="list-style-type: none"><li>• Human Behaviour</li><li>• Conditioning</li><li>• Tactical Communication Skills for Criminal Justice</li><li>• Introduction to Criminal Justice Services in Canada</li><li>• Police Skills</li></ul> | <ul style="list-style-type: none"><li>• Police Officer</li><li>• Bylaw Enforcement Officer</li><li>• Commercial Vehicle Enforcement Officer</li><li>• Criminologist</li><li>• Federal Air Marshal</li></ul> |

## Science and Computing Science

| PROGRAM NAME  | MINIMUM REQUIREMENTS  | SAMPLE COURSES   | SAMPLE JOBS   |
|---|---|--|---|
| <p><b>Master of Science in Data Science</b></p> <p>Designed to provide students with solid knowledge, techniques, and experience in the research and applications of data science, and to prepare students to become researchers and leaders in the emerging area of applied research and application at the regional, national, and global levels. Prospective students are expected to demonstrate working knowledge of statistics, data structures and algorithms, databases and R/Python software packages.</p> <p>Preference will be given to students who have specialized in the area of statistics, computing science, mathematics and engineering.</p> <p><b>tru.ca/mscads</b></p> | <ul style="list-style-type: none"><li>• 3 or 4-year undergraduate degree in a related discipline or equivalent (min GPA 3.0 for project option or 3.33 for thesis option on a scale of 4.33 in the last 60 credits)</li><li>• IELTS 6.5, no section below 6.0 or equivalent</li><li>• 2 references (TRU to provide forms)</li><li>• Knowledge Mapping Form (strongly recommended)</li></ul> | <ul style="list-style-type: none"><li>• Advanced Modelling Techniques</li><li>• Advanced Optimization Methods</li><li>• Applied Statistics in Data Mining</li><li>• Exploratory Data Analysis and Data Visualization</li></ul> | <ul style="list-style-type: none"><li>• Business Intelligence Reporting Professional</li><li>• Statistician</li><li>• Data Analyst</li><li>• Data Mining or Big Data Engineer</li><li>• Program/Project Manager</li></ul> |

|   |  |  |  |
|---|--|--|--|
| <p><b>Master of Engineering Science (Software Engineering)</b></p> <p>Designed to provide students with a deep understanding of software development principles, advanced engineering practices, and the ability to design, implement, and evaluate complex software systems in industrial and research settings. Prospective students are expected to demonstrate working knowledge of programming languages, software architecture, data structures and algorithms, and familiarity with development tools and version-control systems. Preference will be given to applicants who have specialized in computer science, software engineering, systems design, or a closely related field, and who have practical experience in team-based software projects.</p> <p><b>tru.ca/mengsc</b></p> | <ul style="list-style-type: none"><li>• 3 or 4-year undergraduate degree in a related discipline or equivalent (min GPA 3.0 for project option or 3.33 for thesis option on a scale of 4.33 in the last 60 credits)</li><li>• IELTS 6.5, no section below 6.0 or equivalent</li><li>• 2 references</li></ul>   | <ul style="list-style-type: none"><li>• One required course: ENGR 6000 – Thesis (12 credits)</li><li>• Five software engineering concentration-specific, 3-credit graduate courses (15 credits)</li></ul>                | <ul style="list-style-type: none"><li>• Software Development Engineer</li><li>• Systems Architect</li><li>• DevOps Engineer</li><li>• Software Quality Assurance (QA) Engineer</li><li>• Technical Project Manager</li><li>• Solutions Architect</li></ul> |
| <p><b>Master of Science in Environmental Science</b></p> <p>Designed to produce graduates who are innovative and have multi-disciplinary skills and broad knowledge in the field of environmental science. It is structured to be unique, flexible and relevant.</p> <p><b>tru.ca/science/masters-degrees/msces</b></p>   | <ul style="list-style-type: none"><li>• <b>Must have a TRU thesis supervisor before you apply</b></li><li>• 3 or 4-year undergraduate degree or equivalent (min GPA 3.33 on a scale of 4.33 in the last 60 credits) Lower GPA may be considered for applicants with related field experience</li><li>• IELTS 6.5, no section below 6.0 or equivalent</li><li>• Resume and letter of intent</li></ul> | <ul style="list-style-type: none"><li>• Environmental Science: History, Philosophy,</li><li>• and Concepts</li><li>• Environmental Science: Conducting Science</li><li>• Thesis: Master’s Thesis</li></ul>               | <ul style="list-style-type: none"><li>• Environmental Policy Director</li><li>• Project Manager</li><li>• Environmental Coordinator</li></ul>  |
| <p><b>Post-Baccalaureate Diploma in Applied Data Science</b></p> <p>Develop strong analytical, technical, and professional skills and foundations in the principles and practice of Mathematics, Statistics, and related Computing technologies. These skill sets will help open career opportunities in the field of Applied Data Science and Data Analytics.</p> <p><b>tru.ca/science/programs/pbd-applied-data-science</b></p>   | <ul style="list-style-type: none"><li>• 3 or 4-year undergraduate degree in any discipline, with a minimum 3.00 GPA on scale of 4.0 in last 60 credits</li><li>• All English 12 (73%) or IELTS 6.5, or equivalent</li></ul>  | <ul style="list-style-type: none"><li>• Introduction to applied data science with Python</li><li>• Artificial intelligence</li><li>• Data mining</li></ul>   | <ul style="list-style-type: none"><li>• Data Analyst</li><li>• Business Analyst</li><li>• Data and Analytics Manager</li><li>• Database Administrator</li></ul>  |
| <p><b>Bachelor of Computing Science</b></p> <p>Explore a career in the technology industry—software and hardware design, system architecture, operating system structure and modeling and simulation. The BCS degree consists of two years of general study followed by two years of concentrated computing studies. Double degree option with Business Administration is available.</p> <p><b>tru.ca/compsci</b></p>   | <ul style="list-style-type: none"><li>• All English 12 (73%) or IELTS 6.5, or equivalent</li><li>• Pre-Calculus 12 or Math 12 (67%) or equivalent</li></ul>  | <ul style="list-style-type: none"><li>• Discrete Structures</li><li>• Computer Network Security</li><li>• Software Engineering</li><li>• Advanced Web Design and Programming</li><li>• Artificial Intelligence</li></ul> | <ul style="list-style-type: none"><li>• Web, Design, and Integration Developer</li><li>• Project Manager</li><li>• Mobile Application Developer</li><li>• Computer Programmer</li></ul>  |

|   |   |  |  |
|---|---|--|--|
| <p><b>Bachelor of Science</b></p> <p>Enjoy both depth and breadth in your science education.</p> <p>The rigorous BSc program offers opportunities for practical experience, Co-op, undergraduate research and mentorship by internationally recognized faculty researchers across a spectrum of disciplines.</p> <p><b>Majors:</b> Animal Biology, Biology, Cellular, Chemical Biology, Chemistry, Computing Science, Computing Science &amp; Mathematics, Data Science, Ecology &amp; Environmental Biology, Environmental Chemistry, General Science, Mathematics, Mathematics &amp; Economics, Molecular &amp; Microbial Biology, Physics, Pre-professional Health Science</p> <p><b>Minors:</b> Environmental Economics &amp; Sustainability, Management</p> <p><b>tru.ca/bsc</b></p> | <ul style="list-style-type: none"><li>• All English 12 (73%) or IELTS 6.5, or equivalent</li><li>• Pre-Calculus 12 (67%) or equivalent</li><li>• Biology 11 or 12 (67%) or equivalent. Not required for majors in computing, math, or physics.</li><li>• Chemistry 11 or 12, or equivalent</li><li>• Physics 11 or 12, or equivalent</li><li>• Upgrading available while in the program</li></ul> | <ul style="list-style-type: none"><li>• Cell Biology</li><li>• Inorganic Chemistry</li><li>• Numerical Analysis</li><li>• Relativity and Quanta</li><li>• Sustainable Economic Development</li></ul>   | <ul style="list-style-type: none"><li>• Lab Technologist</li><li>• Computing Analyst</li><li>• Project Manager</li><li>• Scientific Writer</li><li>• Technical Manager</li></ul>   |
| <p><b>Bachelor of Engineering in Software Engineering</b></p> <p>If you want to be a professional with the technical knowledge and skills to design, develop, test and maintain problem-solving software by applying systematic engineering principles, a software engineering degree is the right choice. Join the fastest growing and in-demand profession to be part of teams producing software-enabled products of high technical complexity.</p> <p><b>tru.ca/se</b></p>  | <ul style="list-style-type: none"><li>• All English 12 (73%) or IELTS 6.5, or equivalent</li><li>• Pre-Calculus 12 (67%) or equivalent</li><li>• Chemistry 11 (67%) or equivalent</li><li>• Physics 11 (67%) or equivalent</li></ul> <p><b>Limited seats</b></p>  | <ul style="list-style-type: none"><li>• Software Engineering Design: Process &amp; Principles</li><li>• Software Design Pattern</li><li>• Software Quality Engineering</li></ul>                       | <ul style="list-style-type: none"><li>• Software Application Development</li><li>• Software Testing</li><li>• Software Design</li><li>• Database Management</li><li>• Network Management and Operations</li><li>• Security Analysis and Protection</li></ul> |
| <p><b>Bachelor of Engineering in Computer Engineering</b></p> <p>The computer engineering program at Thompson Rivers University is your gateway to a dynamic and exciting career in technology. Our program equips you with the knowledge and skills to become a proficient computer engineer that’s ready to tackle real-world challenges.</p> <p><b>tru.ca/ceng</b></p>   | <ul style="list-style-type: none"><li>• All English 12 (73%) or IELTS 6.5, or equivalent</li><li>• Pre-Calculus 12 (67%) or equivalent</li><li>• Chemistry 11 (67%) or equivalent</li><li>• Physics 11 (67%) or equivalent</li></ul> <p><b>Limited seats</b></p>  | <ul style="list-style-type: none"><li>• Computer System Design</li><li>• Algorithms &amp; Data Structures</li><li>• Digital and Semiconductor Electronics</li><li>• Introduction to Robotics</li></ul> | <ul style="list-style-type: none"><li>• Embedded systems engineer</li><li>• Hardware design engineer</li><li>• Network engineer</li><li>• Autonomous system design engineer</li><li>• Robotics engineer</li><li>• Digital system design engineer</li></ul>   |
| <p><b>Bachelor of Natural Resource Science</b></p> <p>Gain a broad and in-depth understanding of natural resources, including not only biology, ecology and scientific method, but sector-specific resource management for forestry, fisheries, range and recreation.</p> <p>The BNRS program provides hands-on learning in the field and opportunities for undergraduate research and study abroad.</p> <p><b>Minor:</b> Environmental Economics &amp; Sustainable Development</p> <p><b>tru.ca/bnrs</b></p>   | <ul style="list-style-type: none"><li>• All English 12 (73%) or IELTS 6.5, or equivalent</li><li>• Pre-Calculus 12 (67%) or equivalent</li><li>• Biology 11 (67%) or equivalent</li><li>• Chemistry 11, or equivalent</li></ul> <p><b>Competitive admission</b></p>   | <ul style="list-style-type: none"><li>• Biometrics</li><li>• Natural Resource Pathology</li><li>• Forest Economics</li><li>• Chemical Bonding and Organic Chemistry</li></ul>                          | <ul style="list-style-type: none"><li>• Fisheries Researcher</li><li>• Forestry Interpreter and Guide</li><li>• Wildlife Biology Researcher</li><li>• Range Manager</li><li>• Ecology and Land Manager</li></ul>   |
| <p><b>Computing Science Diploma</b></p> <p>Become proficient in the application of computers to solve business-related problems. Develop your technical and computer skills in combination with communication and business skills.</p> <p>Your diploma credits count towards completion of the Bachelor of Computing Science degree.</p> <p><b>tru.ca/compsci</b></p>   | <ul style="list-style-type: none"><li>• All English 12 (73%) or IELTS 6.5, or equivalent</li><li>• Pre-Calculus 12 or Math 12</li><li>• (67%) or equivalent</li></ul> <p><b>Limited seats</b></p>   | <ul style="list-style-type: none"><li>• Mathematics for Computing Science</li><li>• Website Design and Development</li><li>• Database Systems</li><li>• Computer Programming</li></ul>                 | <ul style="list-style-type: none"><li>• Multimedia Developer</li><li>• Game Developer</li><li>• Human Computer Interface Designer</li><li>• Network and Telecommunication System Administrator</li></ul>   |

|   |   |   |   |
|---|---|---|---|
| <p><b>Computer Network and Cybersecurity Diploma</b></p> <p>Become proficient in applying network and security principles to protect and optimize business IT infrastructures. Develop hands-on skills in router/switch configuration, firewall management, intrusion detection, and vulnerability assessment. Your diploma credits count toward completion of the Bachelor of Computing Science degree.</p> <p><b>tru.ca/cyber</b></p>                                 | <ul style="list-style-type: none"><li>• All English 12 (73%) or IELTS 6.5, or equivalent</li><li>• Pre-Calculus 12 or Math 12 (67%) or equivalent</li></ul> <p><b>Limited seats</b></p>   | <ul style="list-style-type: none"><li>• Computer Networks</li><li>• Ethical Hacking</li></ul>   | <ul style="list-style-type: none"><li>• Network Administrator</li><li>• Cybersecurity Analyst</li><li>• IT Support Specialist (with security focus)</li><li>• Security Operations Center (SOC) Analyst</li><li>• Firewall &amp; Network Security Engineer</li><li>• Junior Penetration Tester</li></ul> |
| <p><b>Regenerative Agriculture Diploma</b></p> <p>The first of its kind in British Columbia, this program offers practical experience on your choice of farms or ranches, focusing on multiple enterprises from livestock to diverse crops. It integrates business management with regenerative agriculture practices, preparing participants to successfully manage a resilient agricultural business globally.</p> <p><b>tru.ca/ranching</b></p>                      | <ul style="list-style-type: none"><li>• All English 12 or IELTS 6.5, or equivalent</li><li>• A good working knowledge of Microsoft Word and Excel</li><li>• Two letters of reference</li></ul>  | <ul style="list-style-type: none"><li>• Business Strategy</li><li>• Agriculture Marketing</li><li>• Riparian Management</li><li>• Range Ecology</li><li>• Stockmanship</li><li>• Enterprise Diversification</li><li>• Beef Production</li><li>• Sheep Production</li><li>• Agri-tourism</li></ul> | <ul style="list-style-type: none"><li>• Farm or Ranch Manager</li><li>• Range and Land Use Manager</li><li>• Commercial Account Manager</li><li>• Economic Development Officer</li><li>• Community Development Consultant</li><li>• Agriculture Producer or Entrepreneur</li></ul>                      |
| <p><b>Architectural &amp; Engineering Technology Diploma (ARET)</b></p> <p>The ARET program emphasizes the design processes in building, civil and mechanical technologies, involving design projects for building structures, subdivisions, municipal services, and electrical, plumbing, lighting and HVAC systems.</p> <p><b>tru.ca/aret</b></p>   | <ul style="list-style-type: none"><li>• All English 12 (73%) or IELTS 6.5, or equivalent</li><li>• Math 12 (67%) or equivalent</li><li>• Physics 11, or equivalent</li></ul> <p><b>Limited seats</b></p>  | <ul style="list-style-type: none"><li>• Computer Aided Design and Drafting</li><li>• Building Electrical Design</li><li>• Site Planning and Development</li><li>• Fluid Mechanics</li></ul>   | <ul style="list-style-type: none"><li>• Building Technologist</li><li>• Civil Technologist</li><li>• Architectural Designer</li><li>• Mechanical Technologist</li></ul>   |
| <p><b>Engineering Transfer (Year 1)</b></p> <p>Get started on your engineering degree at TRU by taking one year of general study courses that are common to all engineering disciplines. This program transfers into the second year of a full engineering program at either the University of British Columbia or the University of Victoria, or stay at TRU to complete Year 2, Electrical or Computer for entry into third year at UVic.</p> <p><b>tru.ca/et</b></p> | <ul style="list-style-type: none"><li>• All English 12 (73%) or IELTS 6.5, or equivalent</li><li>• Pre-Calculus 12 (73%) or equivalent</li><li>• Chemistry 12 (73%) or equivalent</li><li>• Physics 12 (73%) or equivalent</li></ul> <p><b>Competitive admission</b><br/><b>Application Deadline March 1</b></p>  | <ul style="list-style-type: none"><li>• Principles of Software Development</li><li>• Engineering Graphics</li><li>• Linear Algebra for Engineers</li><li>• Principles of Chemistry</li><li>• Physics for Engineers</li></ul>  | <ul style="list-style-type: none"><li>• Chemical Engineer</li><li>• Civil Engineer</li><li>• Mechanical Engineer</li><li>• Electrical Engineer</li><li>• Computer Engineer</li></ul>  |
| <p><b>Engineering Transfer (Year 2, Electrical or Computer)</b></p> <p>Complete second-year engineering courses in either electrical or computer engineering, plus a four- to eight-month co-op term. Study circuit analysis and digital electronics, design and test microcontroller circuits and learn to control various mechanical systems. Transfers to the third-year electrical or computing stream at the University of Victoria.</p> <p><b>tru.ca/et</b></p>   | <ul style="list-style-type: none"><li>• Completion of first year of the Engineering Transfer Program at TRU (38 credits) with a cumulative grade point average of 2.50</li><li>• A minimum grade of C- or better in all courses that are part of the first-year transfer program.</li></ul> <p><b>Competitive admission</b><br/><b>Application Deadline March 1</b></p> | <ul style="list-style-type: none"><li>• Circuit Analysis</li><li>• Differential Equations</li><li>• Calculus</li><li>• Digital Electronics</li><li>• Electrical Properties of Materials</li><li>• Computer Programming</li></ul>  | <ul style="list-style-type: none"><li>• Electrical Engineer</li><li>• Computer Engineer</li><li>• Aerospace Engineer</li><li>• Biomedical Engineer</li><li>• Software Engineer</li></ul>  |

## Trades and Technology

| PROGRAM NAME  | MINIMUM REQUIREMENTS   | SAMPLE COURSES   | SAMPLE JOBS   |
|---|--|--|---|
| <p><b>Horticulture</b></p> <p>This program contributes to the knowledge and experience required to create and preserve sustainable urban environments while pursuing careers in landscape design, installation and maintenance, either as an independent entrepreneur or within a horticulture business or municipal parks department.</p> <p><b>tru.ca/horticulture</b></p>  | <ul style="list-style-type: none"><li>• All English 12 (73%) or IELTS 6.5, or equivalent</li><li>• Math 11 (60%) or equivalent</li></ul> <p><b>Limited seats</b></p> | <ul style="list-style-type: none"><li>• Greenhouse Production</li><li>• Soil Science</li><li>• Landscaping</li><li>• Nursery Production and Retailing</li><li>• Turfgrass Management</li></ul> | <ul style="list-style-type: none"><li>• Landscaping</li><li>• Nurseries</li><li>• Garden centres</li><li>• Municipal parks</li><li>• Commercial greenhouses</li><li>• Orchards</li><li>• Golf courses</li></ul>   |
| <p><b>Bachelor of Technology (3rd year admission, after diploma in Water Treatment, Electrical or Architectural Engineering)</b></p> <p>Learn the knowledge and skills necessary to become a team leader, supervisor or manager in a changing business and technical environment. Subjects covered include communications, management principles, motivation and strategic thinking.</p> <p><b>tru.ca/btech</b></p> | <ul style="list-style-type: none"><li>• All English 12 (73%) or IELTS 6.5, or equivalent</li><li>• Math 11 (60%) or equivalent</li></ul> <p><b>Limited seats</b></p> |  | <ul style="list-style-type: none"><li>• Water Treatment Operations Technologist</li><li>• Water Quality Analyst</li><li>• Electrical Engineering Technologist</li><li>• Process Control Technician</li><li>• Field Service Engineer (Water &amp; Wastewater Systems)</li><li>• Maintenance and Reliability Technologist</li></ul> |
| <p><b>Construction Electrician (Diploma of Trades)</b></p> <p>Gain practical skills in residential, commercial, and industrial electrical systems, including blueprint reading, wiring installation, code compliance, and safety procedures. Hands-on labs prepare you for registered apprenticeship and the Red Seal exam.</p> <p><b>tru.ca/electric</b></p>   | <ul style="list-style-type: none"><li>• All English 12 (73%) or IELTS 6.5, or equivalent</li><li>• Math 11 (60%) or equivalent</li></ul> <p><b>Limited seats</b></p> |  | <ul style="list-style-type: none"><li>• Construction Electrician</li><li>• Industrial Electrician Apprentice</li><li>• Maintenance Electrician</li><li>• Electrical Site Supervisor Assistant</li><li>• Electrical Estimator (Junior)</li><li>• Wireperson for Construction Projects</li></ul>                                    |
| <p><b>Wildfire Studies Diploma</b></p> <p>Develop the knowledge and skills needed to prevent, manage, and suppress wildfires in diverse environments. Hands-on training covers fire behaviour analysis, suppression tactics, prescribed burning, air operations, and incident command systems.</p> <p><b>tru.ca/wildfirestudies</b></p>   | <ul style="list-style-type: none"><li>• All English 12 (73%) or IELTS 6.5, or equivalent</li><li>• Math 11 (60%) or equivalent</li></ul> <p><b>Limited seats</b></p> |  | <ul style="list-style-type: none"><li>• Wildland Firefighter</li><li>• Fire Behaviour Analyst Trainee</li><li>• Prescribed Burn Technician</li><li>• Incident Management Assistant</li><li>• Aviation Fire Operations Specialist</li><li>• Fuel Management Technician</li></ul>   |

|   |   |   |   |
|---|---|---|---|
| <p><b>Retail Meat Processing Foundation Certificate</b></p> <p>Learn the fundamentals of meat cutting, safety, and sanitation for retail environments. Gain hands-on experience in knife skills, product fabrication, portion control, and industry-standard food-handling practices.</p> <p><b>tru.ca/meat</b></p>   | <ul style="list-style-type: none"><li>• All English 12 (73%) or IELTS 6.5, or equivalent</li><li>• Math 11 (60%) or equivalent</li></ul> <p><b>Limited seats</b></p>  |   | <ul style="list-style-type: none"><li>• Meat Cutter Assistant</li><li>• Retail Butcher</li><li>• Meat Counter Clerk</li><li>• Meat Packaging Technician</li><li>• Quality Control Inspector (Meat Processing)</li><li>• Food Safety Monitor</li></ul> |
| <p><b>Power Engineering Technology Diploma</b></p> <p>As power engineers, graduates will maintain and operate heating and power plants, refrigeration systems and auxiliary equipment like pumps, compressors, steam turbines, electrical generators, cooling towers and water treatment systems.</p> <p><b>tru.ca/powereng</b></p>   | <ul style="list-style-type: none"><li>• All English 12, or IELTS 6.5, or equivalent</li><li>• Math 12 with 67%</li><li>• Recommended: Physics 11</li></ul>  | <ul style="list-style-type: none"><li>• Safety and Environment</li><li>• Welding and Piping</li><li>• Electricity and Instrumentation</li><li>• Refrigeration Systems</li><li>• Plant Boiler Simulation</li></ul>               | <ul style="list-style-type: none"><li>• Power Engineer</li><li>• Construction Millwright</li><li>• Industrial Mechanic</li><li>• PowerSystems Operator</li><li>• 1300 job openings 2020–2030</li></ul>  |
| <p><b>Water and Wastewater Technology Diploma</b></p> <p>Develop marketable expertise in the operation and maintenance of water and wastewater treatment, distribution, re-use and disposal facilities and in monitoring source water quality. This state-of-the-art program encompasses chemistry, microbiology, math, mechanical and electrical systems, instrumentation and treatment technologies as they are applied in the increasingly vital water industry.</p> <p><b>tru.ca/water</b></p>  | <ul style="list-style-type: none"><li>• All English 12, or IELTS 6.5, or equivalent</li><li>• Math 11, or equivalent</li><li>• Recommended: Chemistry 11, or equivalent and Biology 11, or equivalent</li></ul> <p><b>Limited seats</b></p> | <ul style="list-style-type: none"><li>• Microbiology and Toxicology</li><li>• Management and Leadership Skills</li><li>• Source Water Protection Management</li><li>• Wastewater Utility</li><li>• Mechanical Systems</li></ul> | <ul style="list-style-type: none"><li>• Hazardous Materials Specialist</li><li>• Water Quality Technician</li><li>• Municipal Water and Wastewater Quality Technician</li></ul>   |
| <p><b>Water and Wastewater Utilities Certificate</b></p> <p>Learn to effectively operate and maintain water and wastewater treatment, distribution and collection systems and start your career in an in-demand trade with this entry-level eight-month program.</p> <p>Your certificate credits count towards the Water and Wastewater Technology diploma program.</p> <p><b>tru.ca/water</b></p>  | <ul style="list-style-type: none"><li>• All English 12, or IELTS 6.5, or equivalent</li><li>• Recommended: Math 11, or equivalent, Chemistry 11, or equivalent and Biology 11, or equivalent</li></ul>                                      | <ul style="list-style-type: none"><li>• Filtration</li><li>• Coagulation and Particle Removal</li><li>• Water Chemistry</li><li>• Water Treatment</li><li>• Introduction to Wastewater</li></ul>                                | <ul style="list-style-type: none"><li>• Lab Technician</li><li>• Wastewater Treatment Plant Operator</li><li>• Eco-toxicologist</li><li>• Landfill Engineer</li></ul>   |
| <p><b>Trades Foundation Programs</b></p> <p>These programs give you the basic entry-level skills you need to start working in a trade and prepare for apprenticeship.</p> <p>Automotive Service Technician, Carpenter, Diesel Engine Mechanic, Electrician, Electrical/Industrial Mechanic, Heavy Duty Equipment Technician, Instrumentation &amp; Control Technician, Industrial Mechanic (Millwright) Machinist, Metal Fabricator, Plumber, Welder</p> <p><b>21 – 36 weeks</b></p> <p><b>Red Seal:</b> Many trades allow you to earn extra certification so you can work across Canada.</p> <p><b>tru.ca/trades</b></p> |   |   |   |

# Tuition fees

## Scholarships for International Students

Nine entrance scholarships

\$1.7m awarded in the last five years

- International Athletic Scholarship
- Engineering Scholarship
- Jorge Campos Award for Mexican Citizens
- Scholarship for American Students
- Scholarship for residents of the Bahamas and Caribbean
- International Social Media Ambassador Award
- Diversity Scholarship
- Academic Excellence Award
- Exceptional Student Award



LEARN MORE

## Tuition and fees

Tuition is calculated on a per-credit basis, and program costs can vary. For international students, the tuition and fees operate under a guaranteed model, allowing you to know the full costs before commencing your program.

Tuition rates shown are for the 2025/26. Rates for 2026/27 will be confirmed before registration, subject to TRU Board of Governors’ approval.

To learn more about international tuition and fees, visit [tru.ca/truworld/future-students/fees](https://tru.ca/truworld/future-students/fees)

| GRADUATE PROGRAMS TUITION  |   |
|--|---|
| PROGRAM  | TOTAL TUITION FEES                                  |
| Graduate Diploma in Business Administration  | \$17,455  |
| Master of Business Administration  | \$55,569  |
| 1 Year MBA (if GDBA is not required)   | \$38,114  |
| Master in Environmental Economics and Management   | \$59,384  |
| Master of Science in Environmental Economics and Management  | Project option: \$59,384<br>Thesis option: \$62,560 |
| Graduate Certificate in Educational Studies<br>Completion requires minimum of 9 credits or 3 courses | \$10,973  |
| Master of Education (3 semesters)<br>4th semester may be needed for project or thesis options        | \$36,576  |
| Master of Science in Data Science  | \$49,695  |
| Master of Engineering Science (Software Engineering)   | \$46,235 (Pending approval)                         |
| Master of Environmental Science  | \$48,769  |
| Master of Nursing  | \$43,526  |
| Master of Arts in Human Rights and Social Justice  | \$36,576  |

| UNDERGRADUATE PROGRAMS TUITION      |                      |           |                              |
|-------------------------------------|----------------------|-----------|------------------------------|
| PROGRAM                             | TUITION PER SEMESTER |           | TOTAL ESTIMATED TUITION FEES |
|                                     | 4 Courses            | 5 Courses |                              |
| Bachelor’s degrees * (120 credits)  | \$10,188             | \$12,735  | \$101,880                    |
| Post-Baccalaureates (45–60 credits) | \$10,188             | \$12,735  | \$38,205 – \$50,940          |
| Diplomas (60 credits)               | \$10,188             | \$12,735  | \$50,940                     |
| Certificates (30 credits)           | \$10,188             | \$12,735  | \$25,470                     |

1 course = 3 credits  
\*some exceptions



FOR THE MOST UP-TO-DATE FEES

## PLAN YOUR FINANCES WITH CONFIDENCE

TRU is the first post-secondary institution in BC to approve a guaranteed tuition model for international students.

TRU’s Guaranteed Tuition Model gives international students a locked-in tuition rate for the full length of their program, plus one extra year. No surprises. No increases. Just clear planning.

This model also introduces a clear per-credit tuition structure. For undergraduate programs in 2026–2027, tuition is set at \$849 CAD per credit, so you know exactly what you’re paying from start to finish. Master’s programs also use a per-credit model, with rates that vary by program.

**2026–2027 undergraduate tuition:** \$849 CAD per credit

**Most degrees:** 120 credits

**Most diplomas:** 60 credits

The following programs are exempt from TRU’s Guaranteed International Tuition Model:

- Open Learning programs
- English for Academic Purposes
- Graduate Diploma in Business Administration
- Master of Business Administration
- Master in Environmental Economics and Management
- Master of Science in Environmental Economics and Management
- Trades Programs

At TRU, we believe your education should be predictable, affordable and secure. That’s our commitment to your success.

# Get support from day one

Our international recruitment team is your first point of contact for everything TRU.

- Provide insights into TRU’s programs, life on campus, life in Kamloops and more
- Provide pre-admission advising
- Clarify application and admissions requirements and processes
- Connect with an authorized TRU agent in your city
- Connect with campus resources

Learn more: [tru.ca/connect](https://tru.ca/connect)



**Adegoke Omoluyi**  
Africa – North and West



**Tosan Ukpata**  
Africa – North and West



**Caroline Okoth**  
Africa – South, Central and East



**Emily Lu**  
China, Hong Kong, Macau and Taiwan



**Kevin Zhang**  
China, Hong Kong, Macau and Taiwan



**Ksenia Antonova**  
CIS and Middle East



**Ranjit Shastry**  
India, Bangladesh, Nepal and Sri Lanka



**Punit Kumra**  
India



**Rika Kimura**  
Japan



**Aldo Mendizabal**  
Latin America



**Reid Maisonneuve**  
North America and Caribbean



**Danyal Mubashir**  
Pakistan



**Eric Kim**  
South Korea

# Apply for your Canadian Study Permit with BorderPass at TRU

Applying for a study permit is a crucial step in starting your TRU journey. That’s why we’ve partnered with BorderPass to give international students access to expert immigration support at no extra cost. BorderPass guides you through completing your study permit, ensuring accuracy and completion, which increases your chances of success!

With BorderPass, you receive:

- A secure online platform to prepare and submit your application
- Personalized guidance from trusted Canadian immigration lawyers
- Ongoing updates on your visa status and key deadlines

TRU covers all legal fees and subscription fees for applicants. This includes reapplication, as well as judicial review (appeals) in the event of a refusal from a study permit application filed on BorderPass

Students are responsible only for applicable government (IRCC) fees for study permit processing and biometrics.

Learn more at [tru.ca/borderpass](https://tru.ca/borderpass)

# How to apply

Apply with confidence. Study with certainty.



## Apply online

Apply online at [truworld.ca/apply](https://truworld.ca/apply). Upload required documents (transcripts, language proficiency, etc.). Application fee: \$100 CAD.



## Get your conditional offer

Receive a Conditional Letter of Acceptance (CLOA) within 10–15 business days (undergrad) or 4–6 weeks (grad).



## Secure your spot

Pay tuition deposits through PayMyTuition by bank transfer, debit, or credit card at [tru.ca/pay](https://tru.ca/pay).



## Receive your official acceptance

Receive your Official Letter of Acceptance (LOA). TRU obtains your Provincial Attestation Letter (PAL) on your behalf.



## Apply for your study permit

Apply for your Canadian study permit through BorderPass, with support, review, and submission by immigration lawyers at no extra cost.

## Questions?

We are here to help. Scan the QR Code to get in touch with us



LEARN MORE

### TRU refund rules

Students should familiarize themselves with TRU’s refund rules prior to submitting payment for their studies. All new international TRU applicants should know that their first semester tuition fees are non-refundable and non-transferable. After receiving the Letter of Acceptance, the applicant is expected to begin their studies at TRU.

Students withdrawing due to a failure to obtain a study permit prior to arrival at TRU will be entitled to a full refund of tuition and general fees invoiced, minus a \$200 CAD administration fee. Students must notify TRU in writing and provide documentation before the start of the semester. Processing time may take up to eight weeks. New students who wish to defer the start of their first semester of study to a future semester may do so only once and for up to a maximum of one calendar year.



truworld



truworld



truworld



tru.ca/videos



truworld

#mytru  
truworld.ca



Questions? Speak with us today.

**TRU.ca/  
connect**



**THOMPSON  
RIVERS  
UNIVERSITY**

805 TRU Way, Kamloops, BC, Canada V2C 0C8  
+1-250-828-5252

Inquiries: [tru.ca/justask](https://tru.ca/justask) Applications: [truworld.ca/apply](https://truworld.ca/apply)

